

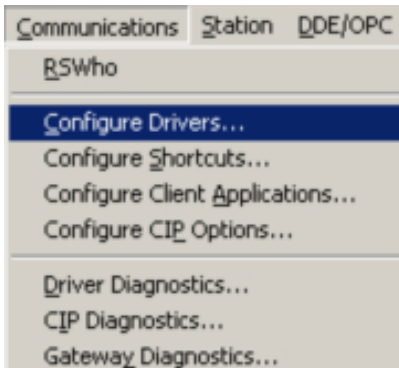
The following steps will take you through the configuration of a DDE/OPC topic for a ProSoft or ProLinx DFNT product. RSLinx will act as the driver to the module and once this is setup you can then get the data into an RSView, WonderWare, or any other application that will support either DDE or OPC topics.

In this sample we will configure the driver, then show an example of how to use this DDE/OPC topic to an Excel Spreadsheet and also use the OPC test client application.

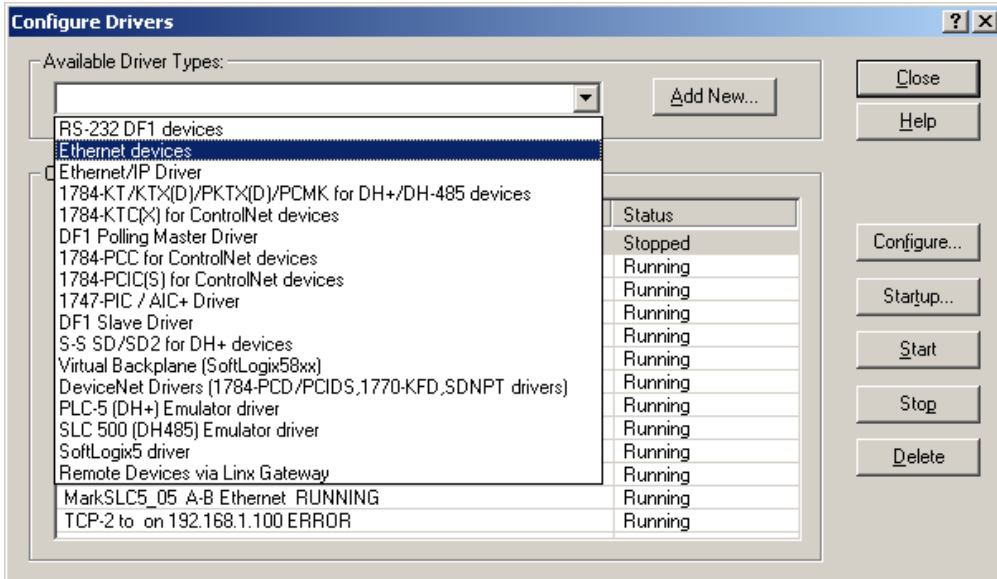
The following table shows the revisions of RSLinx that support DDE/OPC topics:

	Lite	RSLinx for RSView	Single Node	OEM	SDK	Professional	Gateway
DDE Support (CF_Text, XL_Table, AdvanceDDE ¹)			X	X	X	X	X

To configure a DDE/OPC topic you will first need to setup the communications driver. From the pull down menu go to Communications -> Configure Drivers:

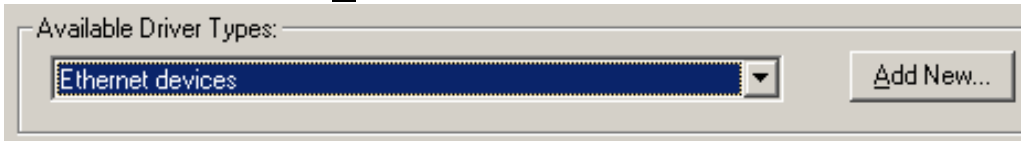


The Configure drivers menu will appear:

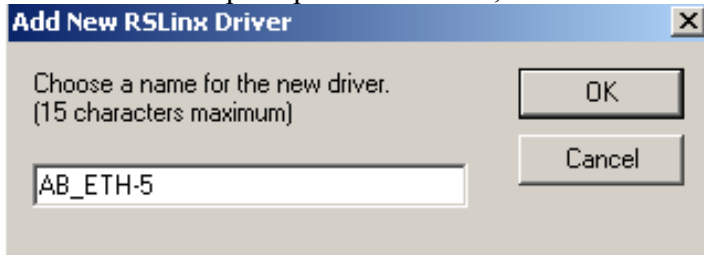


From here you can select either an “Ethernet devices” driver (use this driver when you wish to use the N10 file addressing for the module) or “Remote Devices via Linx Gateway” (to be used when wanting to use the Int_Data[0] addressing mode). Please refer to the user manual for the product for more information on the addressing of the module.

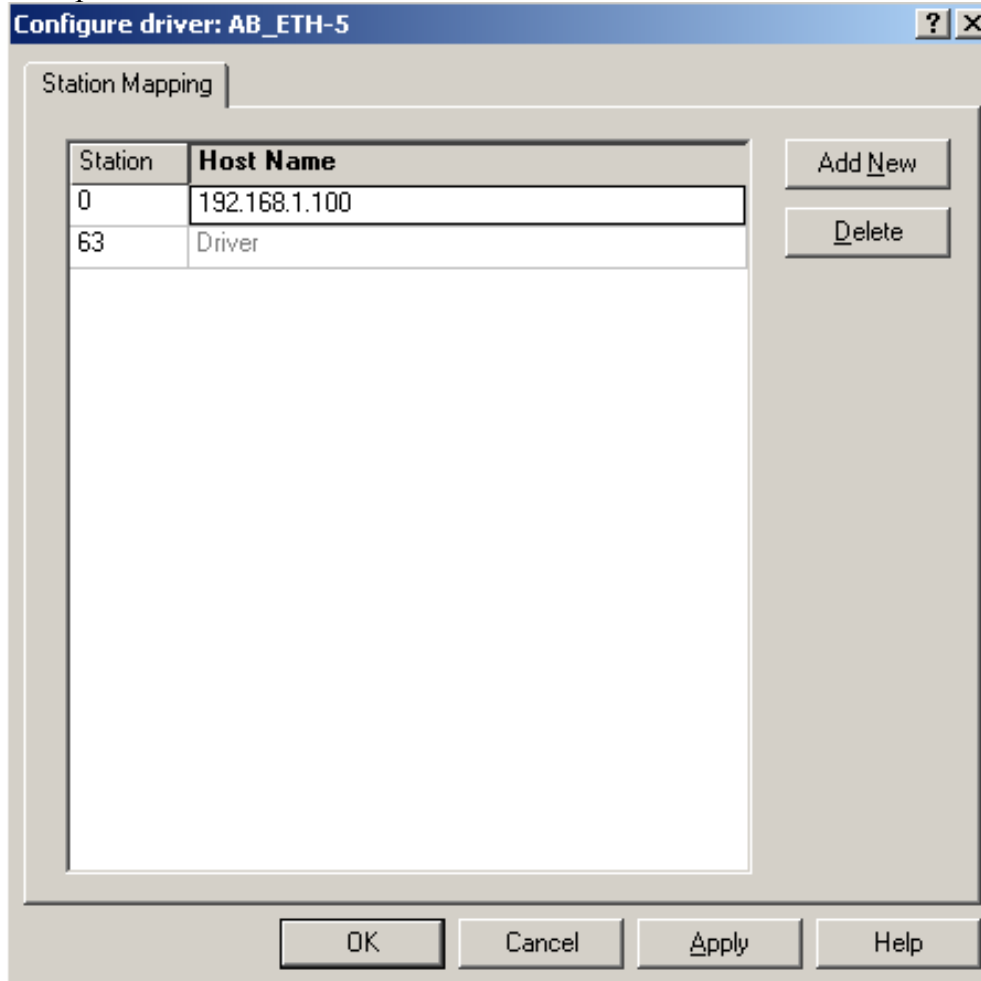
Select a driver and select Add New:



You will now be prompted for a name, Press OK when done:

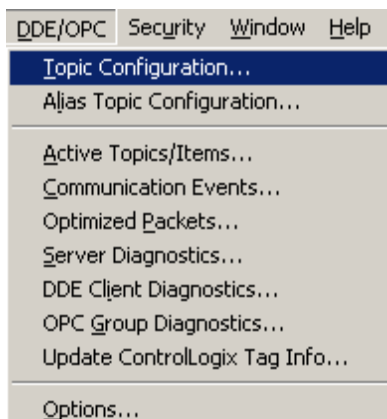


Here in the next screen you will need to define an IP address for the module, in this example the IP address is 192.168.1.100:

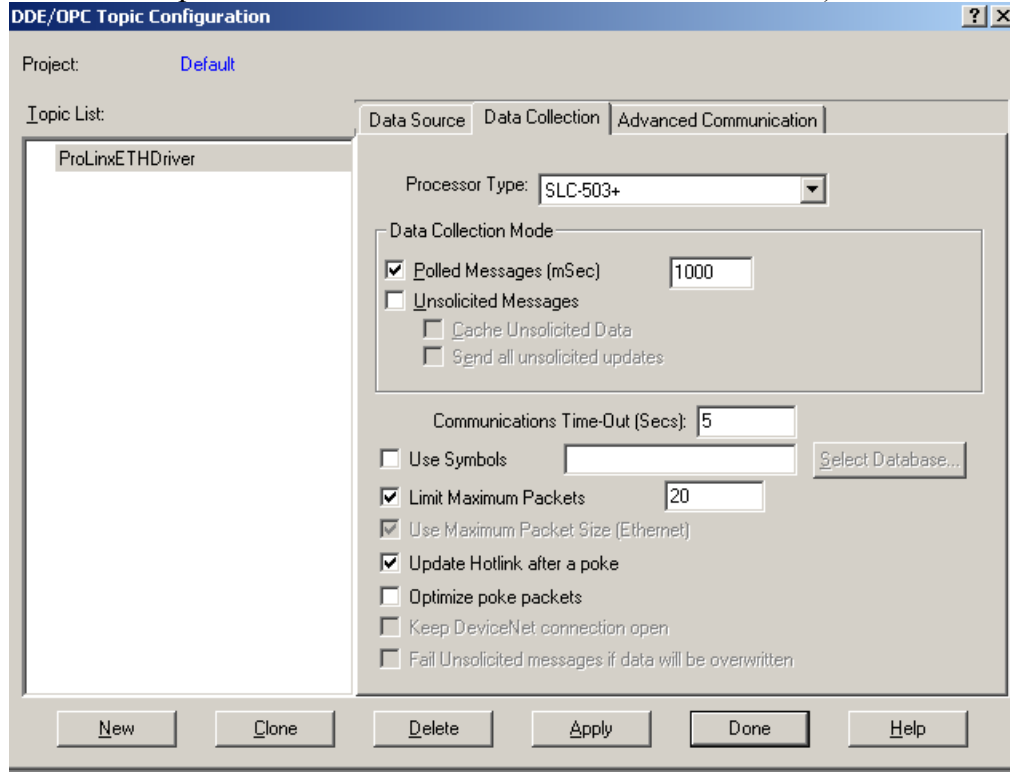


When done click on OK or Apply.

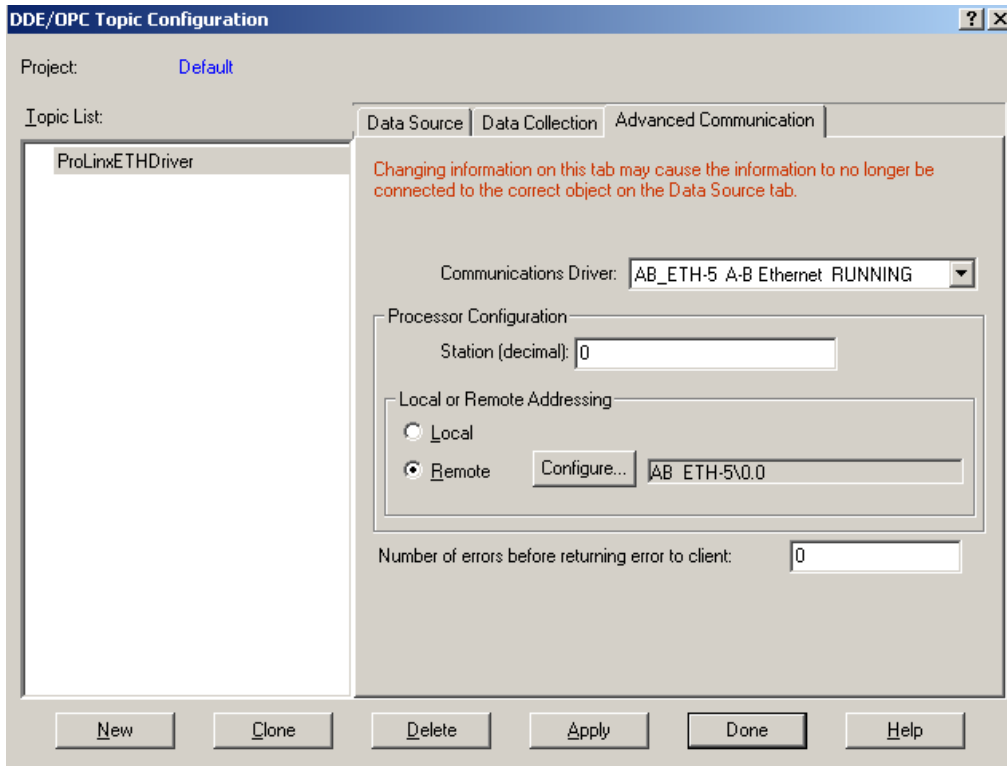
Now that the driver is defined, we can now define the DDE/OPC topic. On the DDDE/OPC topic, select Topic Configuration:



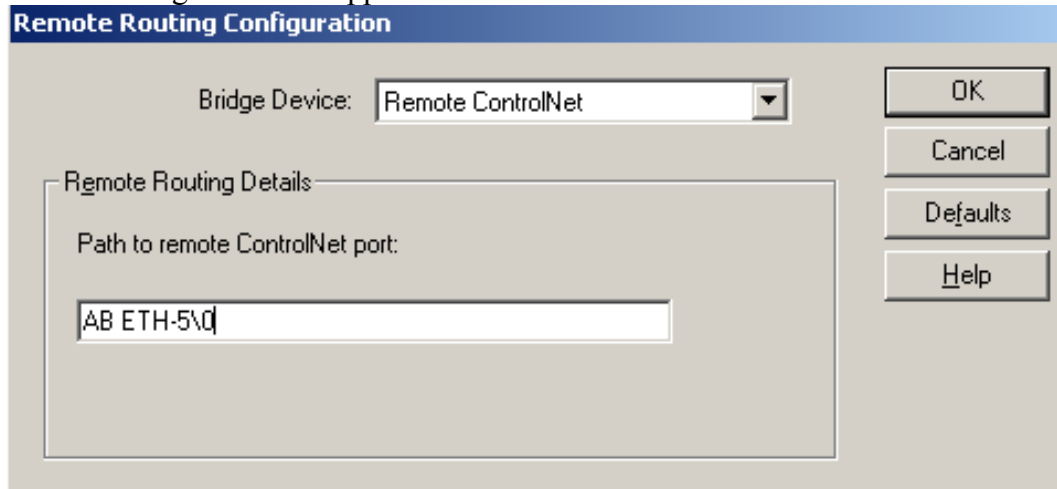
In the below window, Click on NEW and give your topic a name (this will be your DDE/OPC topic name to be used in all references to this device).



Under the data collection tab, select the settings shown above. Then go to the Advanced Communication tab:



Select the communications driver that was setup earlier. Then go to the Local/Remote addressing tab. Here you will want to select Remote, then click on the Configure tab. The following menu will appear:



Select the “Remote ControlNet” for the Bridge Device, then type the Name of the Communications Driver for the “Path to remote ControlNet port”. What this does is it sets the route path for the DFNT module. This step is critical and should not be overlooked. In some older versions of RSLinx this was done automatically, but for version 2.41 of RSLinx you must define this step manually.

Press Done.

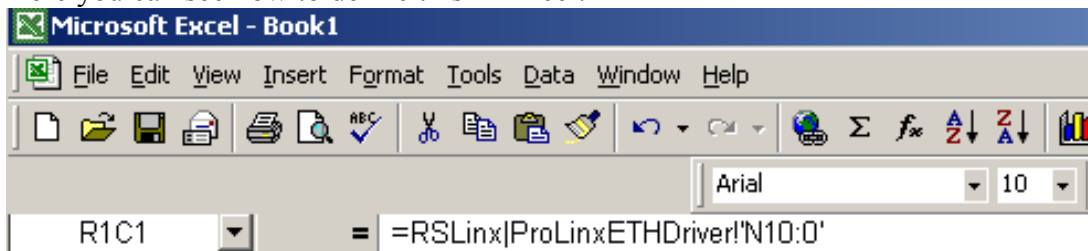
The DDE/OPC topic has now been configured. The next steps will show you how to test this topic. One of the easiest ways is to use Microsoft Excel. To define this in Microsoft Excel you will need to use the following syntax:

=APPLICATION|TOPIC!ITEM

The '|' character (piping symbol) is used to separate the application and topic fields and the '!' (exclamation symbol) is used to separate the topic and item fields. For our example topic of ProLinx1, the entry into the cell is:

=RSLinx|ProLinxETHDriver!'N10:0'

Here you can see how to define this in Excel:



When done press Enter.

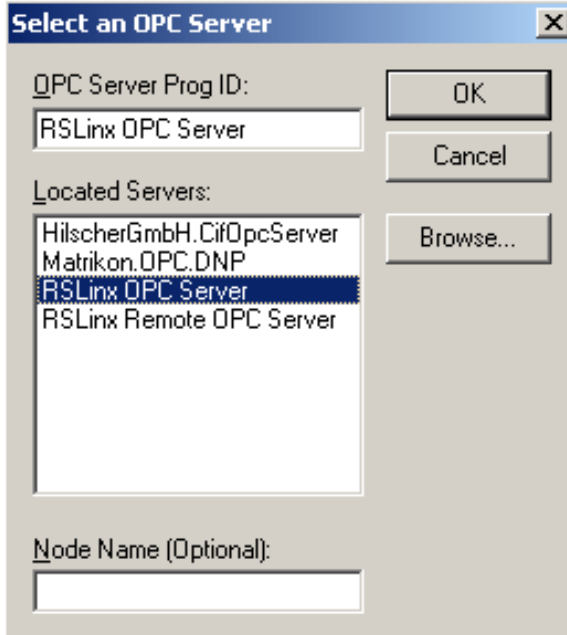
If all is working correctly you should see the value in the module, like shown below:

	1	2	3	4	5	6
1	0					
2						
3						

If you see #N/A, then the connection has not been made. This is shown below:

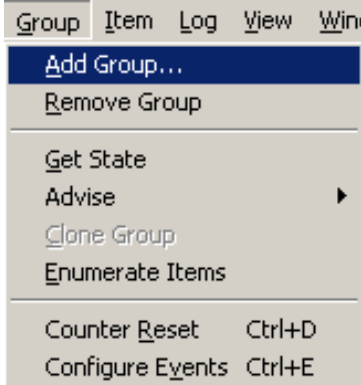
	1	2	3	4	5	6
1	#N/A					
2						

Another tool that can be used is the OPC test client application. Under your Rockwell Software menu, go to RSLinx Tools, then OPC Test Client. From the pull down menu go to File -> New. The following window will appear:



Select RSLinx OPC Server, then check OK.

Next go to the pull down menu and select Group -> Add Group:



You will now need to give the group a name like shown below:

Add New Group [X]

Group Name:

Update Rate (mSec):

Time Bias:

% Deadband:

Active

Uppdate Rate

Allow Timeout

Advise: [v]

with TimeStamp

OK Cancel

Now go to the Item -> Add Item:

Item Log View Window Help

Add Item...

Remove Item(s) Del

Active State

Change Handle(s)...

Set Datatype

Read From Cache

Sync Read Ctrl+Alt+R

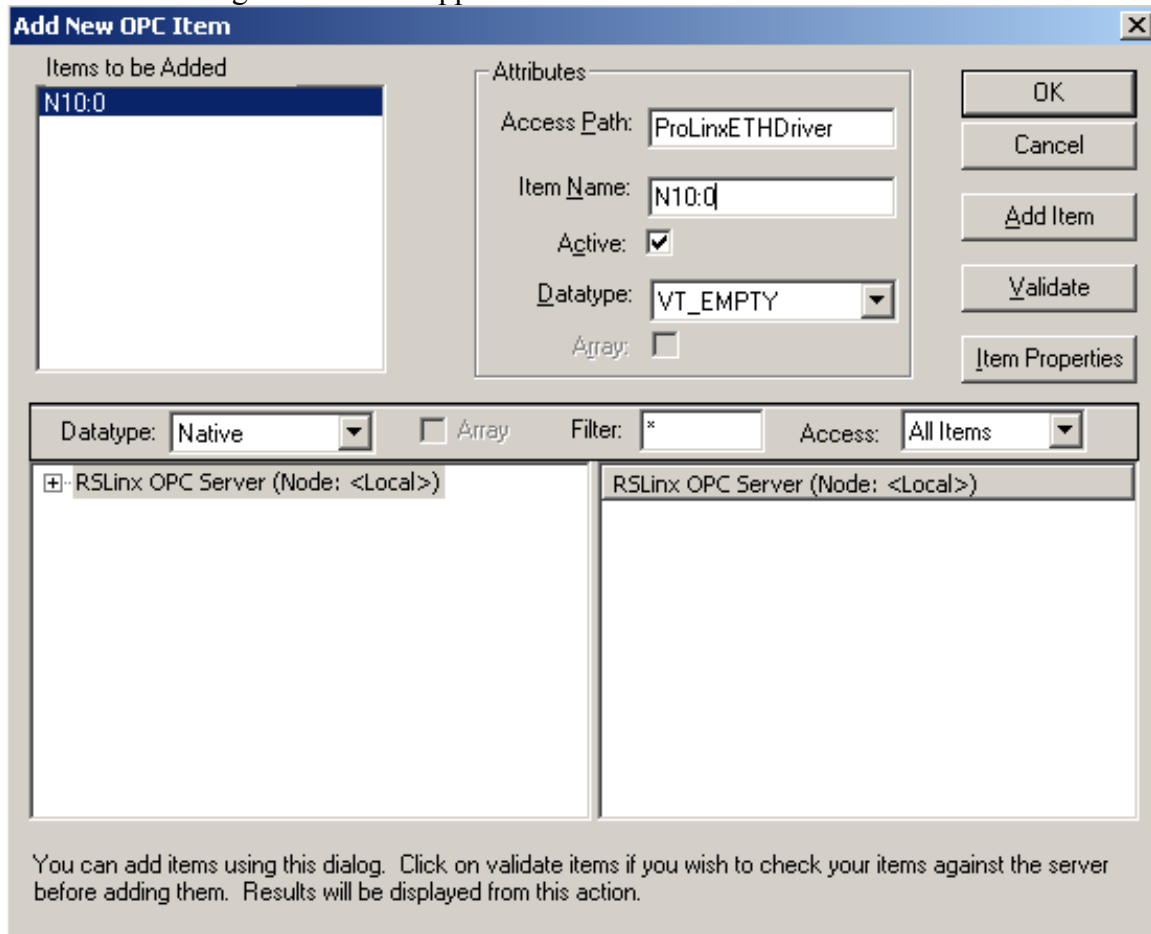
Sync Write...

AsyncIO ▶

AsyncIO2 ▶

Import Items...

Next the following window will appear:



For the Access Path you will want to give the name of the DDE/OPC topic that was configured in RSLinx. The Item Name will be the item in the DFNT module. When done press OK. You should then see the following:

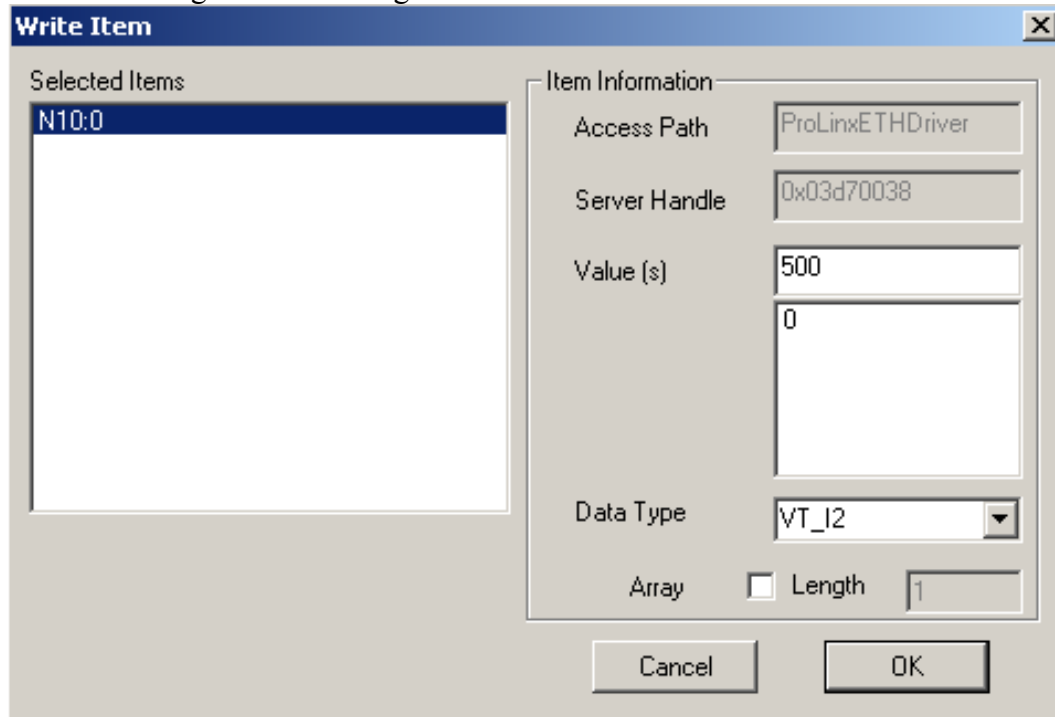
ItemID	Sub Value	Sub Quality	Sub Updates	Update Rate	Run. Avg
N10:0	0	Good	1	0	0.009439

If the Sub Quality is shown as Good, then all is working fine.

To issue a write to this location you could then follow these steps. First you will want to select the item, then a right mouse click will bring up the following menu:



You will then get the following window:



The Data Type should pull up as VT_I2. If it does not, then select it as VT_I2. Type the new value you wish to write to the DFNT module in the Value section. For this example I placed a value of 500 in the value field. When done press OK, you should then see your new value like shown below:

ItemID	Sub Value	Sub Quality	Sub Updates	Update Rate	Run. Avg
N10:0	500	Good	2	0	0.002496

