



Where Automation Connects.



**RLX2-IFH24E & RLX2-IFH9E**  
Industrial Frequency Hopping  
Gateways

April 14, 2016

**RELEASE NOTES**

## Your Feedback Please

We always want you to feel that you made the right decision to use our products. If you have suggestions, comments, compliments or complaints about our products, documentation, or support, please write or call us.

### ProSoft Technology

9201 Camino Media, Suite 200  
Bakersfield, CA 93311  
+1 (661) 716-5100  
+1 (661) 716-5101 (Fax)  
www.prosoft-technology.com  
support@prosoft-technology.com

### RLX2-IFH24E & RLX2-IFH9E Release Notes

April 14, 2016

ProSoft Technology® is a registered copyright of ProSoft Technology, Inc. All other brand or product names are or may be trademarks of, and are used to identify products and services of, their respective owners.

In an effort to conserve paper, ProSoft Technology no longer includes printed manuals with our product shipments. User Manuals, Datasheets, Sample Ladder Files, and Configuration Files are provided on the enclosed DVD and are available at no charge from our web site: <http://www.prosoft-technology.com>

## Content Disclaimer

This documentation is not intended as a substitute for and is not to be used for determining suitability or reliability of these products for specific user applications. It is the duty of any such user or integrator to perform the appropriate and complete risk analysis, evaluation and testing of the products with respect to the relevant specific application or use thereof. Neither ProSoft Technology nor any of its affiliates or subsidiaries shall be responsible or liable for misuse of the information contained herein. Information in this document including illustrations, specifications and dimensions may contain technical inaccuracies or typographical errors. ProSoft Technology makes no warranty or representation as to its accuracy and assumes no liability for and reserves the right to correct such inaccuracies or errors at any time without notice. If you have any suggestions for improvements or amendments or have found errors in this publication, please notify us.

No part of this document may be reproduced in any form or by any means, electronic or mechanical, including photocopying, without express written permission of ProSoft Technology. All pertinent state, regional, and local safety regulations must be observed when installing and using this product. For reasons of safety and to help ensure compliance with documented system data, only the manufacturer should perform repairs to components. When devices are used for applications with technical safety requirements, the relevant instructions must be followed. Failure to use ProSoft Technology software or approved software with our hardware products may result in injury, harm, or improper operating results. Failure to observe this information can result in injury or equipment damage.

© 2016 ProSoft Technology. All Rights Reserved.

Printed documentation is available for purchase. Contact ProSoft Technology for pricing and availability.

# Contents

Your Feedback Please .....	2
Content Disclaimer .....	2
<b>1 Start Here</b>	<b>5</b>
<hr/>	
1.1 Special Notes .....	5
1.2 Release Enhancements .....	5
<b>2 Firmware Update Procedure</b>	<b>7</b>
<hr/>	
<b>3 Support, Service &amp; Warranty</b>	<b>11</b>
<hr/>	
3.1 Contacting Technical Support .....	11
3.2 Warranty Information .....	12



# 1 Start Here

This document highlights the new features, fixes, enhancements and known issues for the RLX2-IFH9E and RLX2-IFH24E radios.

## 1.1 Special Notes

This section contains information regarding special procedures and potential limitations that may be required for this release.

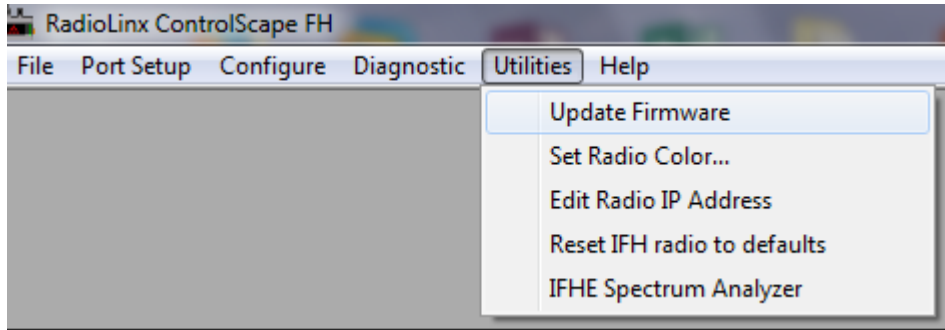
## 1.2 Release Enhancements

Release Version	Release Date	Description
RLX2-IFH9E: RLX2-IFH9E_NetworkCode_v2014r2028.bin RLX2-IFH9E_RadioCode_v5098.stm  RLX2-IFH24E: RLX2-IFH9E_NetworkCode_v2014r2028.bin RLX2-IFH9E_RadioCode_v5098.stm	4/12/2016	<ul style="list-style-type: none"><li>Fixes an issue that caused master radios not to be able to be link to a remote radio through 1 or more repeaters consistently.</li></ul>

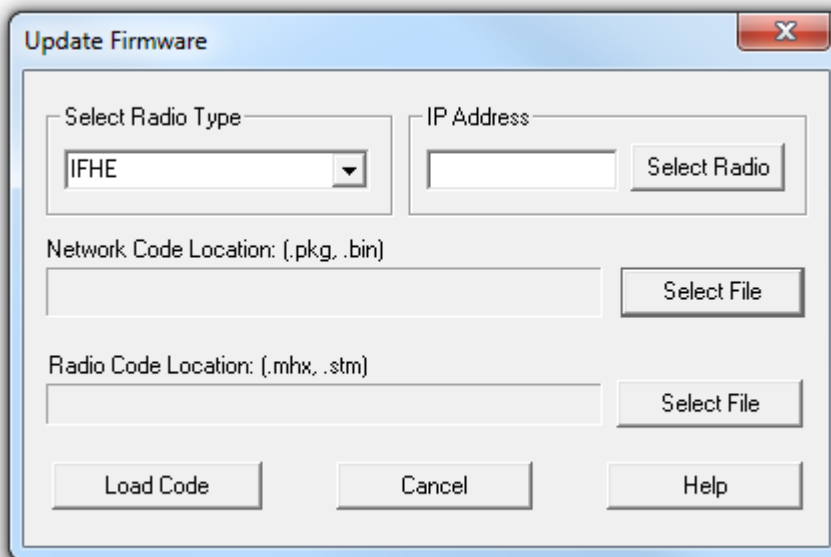


## 2 Firmware Update Procedure

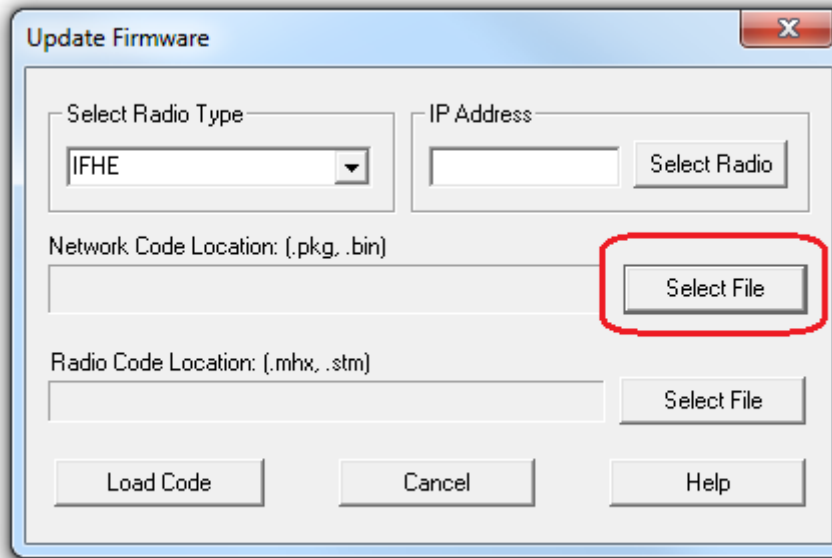
- 1 Launch *ControlScope* Software.
- 2 Click on **Update Firmware** from *Utilities* menu.



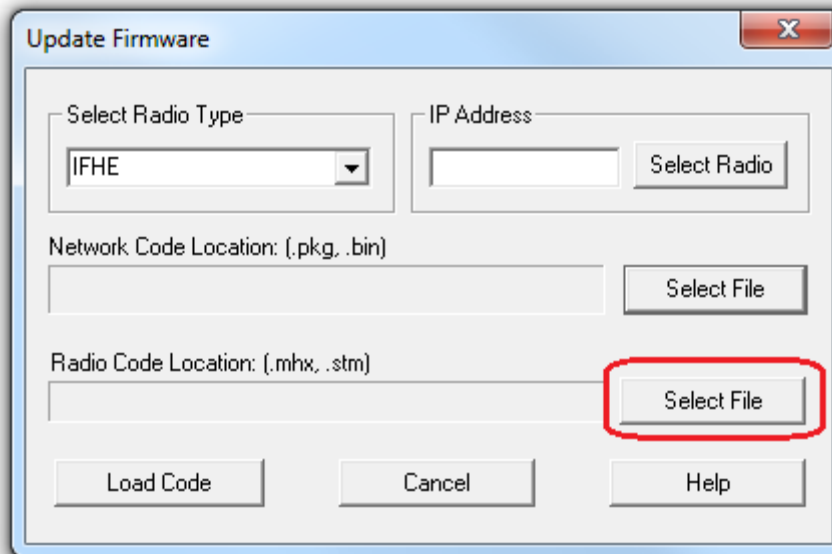
- 3 Enter the *IP Address* of the radio.



- 4 In the *Network Code Location* field, click **Select File** to locate the Network Code file.

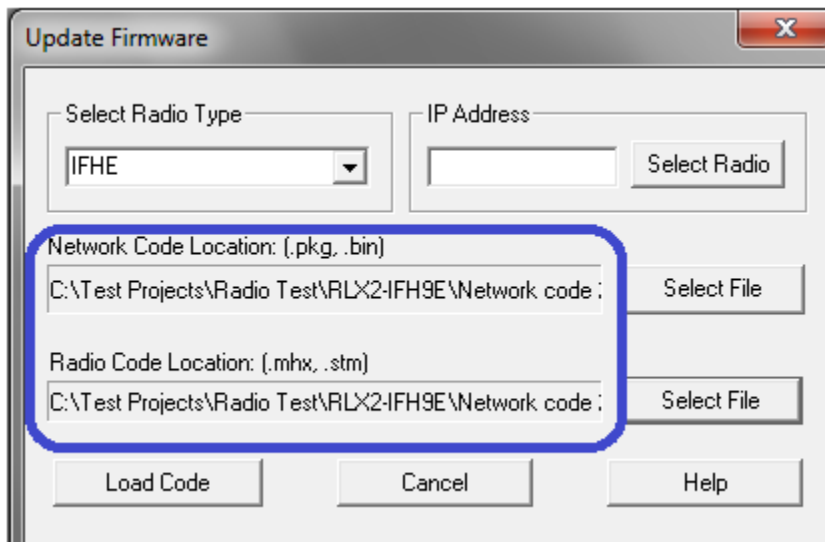


- 5 Repeat steps 2 to 4 for the *Radio Code* file.

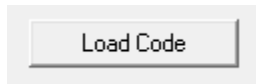




- 6 After both Code files have been selected, the file locations are displayed.



- 7 When ready, click **Load Code** to update the firmware.





## 3 Support, Service & Warranty

### In This Chapter

Contacting Technical Support .....	11
Warranty Information .....	12

### 3.1 Contacting Technical Support

ProSoft Technology, Inc. is committed to providing the most efficient and effective support possible. Before calling, please gather the following information to assist in expediting this process:

- 1 Product Version Number
- 2 System architecture
- 3 Network details

If the issue is hardware related, we will also need information regarding:

- 1 Module configuration and associated ladder files, if any
- 2 Module operation and any unusual behavior
- 3 Configuration/Debug status information
- 4 LED patterns
- 5 Details about the serial, Ethernet or Fieldbus devices interfaced to the module, if any.

**Note:** For technical support calls within the United States, an emergency after-hours answering system allows 24-hour/7-days-a-week pager access to one of our qualified Technical and/or Application Support Engineers. Detailed contact information for all our worldwide locations is available on the following page.

---

<b>Internet</b>	Web Site: <a href="http://www.prosoft-technology.com/support">www.prosoft-technology.com/support</a> E-mail address: <a href="mailto:support@prosoft-technology.com">support@prosoft-technology.com</a>
<b>Asia Pacific</b> (location in Malaysia)	Tel: +603.7724.2080 E-mail: <a href="mailto:asiapc@prosoft-technology.com">asiapc@prosoft-technology.com</a> Languages spoken include: Chinese, English
<b>Asia Pacific</b> (location in China)	Tel: +86.21.5187.7337 x888 E-mail: <a href="mailto:asiapc@prosoft-technology.com">asiapc@prosoft-technology.com</a> Languages spoken include: Chinese, English
<b>Europe</b> (location in Toulouse, France)	Tel: +33 (0) 5.34.36.87.20 E-mail: <a href="mailto:support.EMEA@prosoft-technology.com">support.EMEA@prosoft-technology.com</a> Languages spoken include: French, English
<b>Europe</b> (location in Dubai, UAE)	Tel: +971-4-214-6911 E-mail: <a href="mailto:mea@prosoft-technology.com">mea@prosoft-technology.com</a> Languages spoken include: English, Hindi
<b>North America</b> (location in California)	Tel: +1.661.716.5100 E-mail: <a href="mailto:support@prosoft-technology.com">support@prosoft-technology.com</a> Languages spoken include: English, Spanish
<b>Latin America</b> (Oficina Regional)	Tel: +1-281-2989109 E-Mail: <a href="mailto:latinam@prosoft-technology.com">latinam@prosoft-technology.com</a> Languages spoken include: Spanish, English
<b>Latin America</b> (location in Puebla, Mexico)	Tel: +52-222-3-99-6565 E-mail: <a href="mailto:soporte@prosoft-technology.com">soporte@prosoft-technology.com</a> Languages spoken include: Spanish
<b>Brasil</b> (location in Sao Paulo)	Tel: +55-11-5083-3776 E-mail: <a href="mailto:brasil@prosoft-technology.com">brasil@prosoft-technology.com</a> Languages spoken include: Portuguese, English

---

### 3.2 Warranty Information

For complete details regarding ProSoft Technology's TERMS & CONDITIONS OF SALE, WARRANTY, SUPPORT, SERVICE AND RETURN MATERIAL AUTHORIZATION INSTRUCTIONS please see the documents on the ProSoft Solutions DVD or go to [www.prosoft-technology.com/legal](http://www.prosoft-technology.com/legal)

Documentation is subject to change without notice.