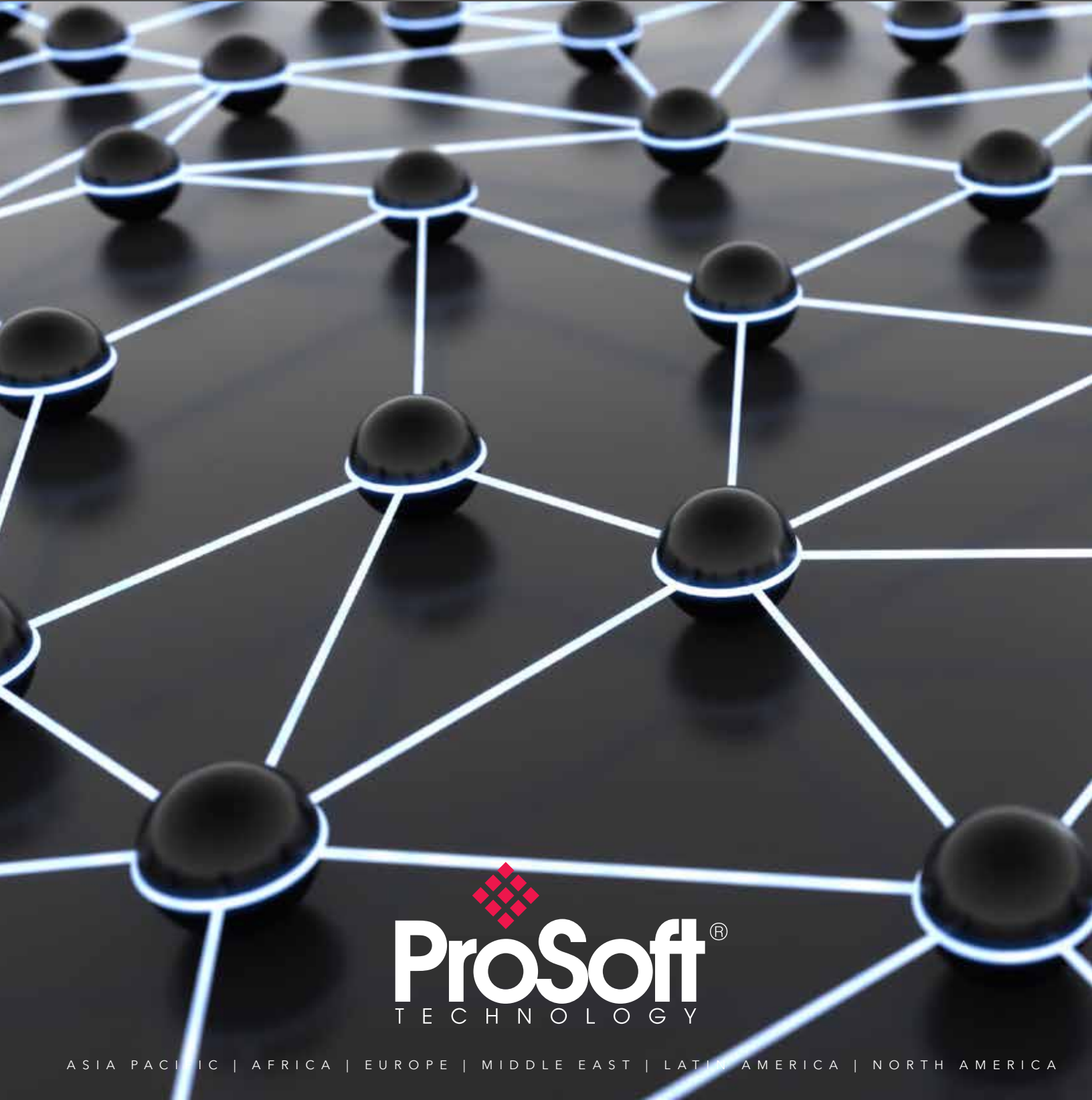


# Where Automation CONNECTS



  
**ProSoft**®  
TECHNOLOGY

ASIA PACIFIC | AFRICA | EUROPE | MIDDLE EAST | LATIN AMERICA | NORTH AMERICA





More than 25 years ago, ProSoft Technology found its beginnings from a need to connect a Rockwell Automation® PLC to a Modbus®-based SCADA host. From his garage, Douglas Sharratt created a module that allowed the PLC-5® to communicate via Modbus. This discovery led to a partnership between Doug Sharratt and Rockwell Automation, and in 1990 ProSoft Technology was formally incorporated, with Doug as founder and president.

Since then, ProSoft has released more than 400 communication products. The company was one of the first suppliers of industrial wireless solutions, helping customers all over the world connect equipment. We now have regional offices in North America, France, Malaysia, and Brasil with regional sales managers in many countries. We have partnered with a variety of companies to extend the range of our communication solutions, and are helping people all over the world get benefits from Industrial Internet of Things technologies to improve their operations, while ensuring strong, secure communications. Our commitment to helping you on your IIoT journey is evident in our tagline, Where Automation Connects.

We continue to expand our offerings with innovative solution like our cloud hosted service, ProSoft Connect, which continues to help our customers get their valuable automation data from wherever they are. Whether you're operating a single plant or have a worldwide network, we have solutions that help keep your enterprise connected. ♦

***We have solutions that help  
keep your enterprise connected.***



---

# STRONG partner ships

---

At ProSoft Technology, we're proud to be partners with Rockwell Automation, Schneider Electric®, and others, helping users of those companies' automation equipment connect with devices speaking dissimilar protocols. We have in-chassis and gateway modules that include more than 60 protocol combinations, enabling customers to connect a number of different devices and controllers, as well as modernize their systems cost-effectively.

We continue to form new partnerships by offering high-value solutions that expand our partners' capabilities. ♦

---

---

***We continue to form new partnerships  
by offering high-value solutions that  
expand our partners' capabilities.***



# how our COMMUN ICATION SOLUTIONS are used

ProSoft Technology solutions are used all over the world in a wide variety of industries & applications. These include Oil & Gas, Food & Beverage, Water/Wastewater, Energy, Automotive, and even Amusement Park rides. Our solutions are designed to assist system

integrators, OEMs, engineering firms, and end users. We are proud of the innovation seen in all of our solutions, and focus each day on how we can optimize the resources of our customers, helping them make the most of their operations. Some of our innovative solutions include:

## **Integrated Flow Computers for Rockwell Automation and Schneider Electric controllers**

In a traditional multi-well pad setup, you'd need multiple standalone flow computers and RTUs. Not so with our solution: Many customers will just need one ProSoft in-chassis flow computer that plugs right into the PAC/PLC, helping them optimize their oil or gas production. This solution also helps users decrease capital spend and maintenance costs.

## **Industrial Hotspot radios designed for OT and IT**

Our 802.11 radios feature an EtherNet/IP™ embedded object and Modbus agent, allowing you to get radio diagnostic data into your PAC/PLC. The radios also have SNMP support, which allow your IT personnel to use their standard tools. The radios feature Ultra-Fast access point switchover times, which is ideal for automotive skid lines, automated storage retrieval systems, and more. This assures no loss of critical control when using a wireless solution. [ continued ]

## **Two Ethernet port gateways that help isolate your networks**

Our dual-port gateways allow each protocol to be on its own subnet to isolate network traffic yet enable you to pass only the data you want between your devices. This also helps you avoid the hassle of changing each device's IP address when a new OEM system needs to be integrated into your existing line.

## **Linux Development Modules for ControlLogix® & CompactLogix™ systems**

Our C/C++ programmable modules are used by OEMs, SIs and end users to solve applications that would be difficult or impossible using traditional PAC/PLC code. ❖

***Our solutions are designed to assist system integrators, OEMs, engineering firms, and end users.***



## **MIGRATING & MODERNIZING** legacy control equipment

Automation system upgrades are necessary projects that all plant engineers have to take on at some point. The challenge is upgrading while minimizing your scheduled downtime. Replacing entire control systems requires a significant amount of downtime, and increases risk to production if everything does not go as planned. It doesn't have to be that way.

With ProSoft Technology's Phased Migration solutions, you can modernize your legacy systems at your own pace, working in phases to minimize scheduled downtime.

We have solutions for legacy Allen-Bradley® Remote I/O™ and Data Highway Plus™ equipment, and legacy PLC and DCS systems. Our solutions allow you to upgrade your drives, PanelView™ terminals, FLEX™ I/O adapters, and PLC-5 or SLC™ controllers with minimal downtime. [ continued ]

---

If you're replacing your legacy Texas Instruments™ 505, Modicon® 800 series, Square D®, or GE Genius™ I/O-based PLC with a Rockwell Automation PAC, our innovative solutions allow your new PAC to control your old I/O system, enabling you to upgrade in phases and minimizing risk. We can also communicate on your old peer-to-peer networks, enabling your new PAC to communicate with other legacy PLCs.

If you're upgrading to a Rockwell Automation PlantPAx™ system, we have in-chassis modules that allow your new system to control existing Honeywell IPC 620, Fisher PROVOX, and Moore APACS I/O. This solution minimizes risk and can allow an upgrade with almost no downtime.

Upgrading your older equipment can seem like a major hassle, but with ProSoft Technology's solutions, you can simplify the process and get back up and running quickly. ♦

---



---

# making WORLD WIDE connections

---

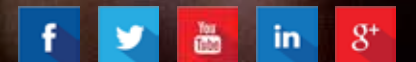
We all have less time to get things done, so we have created a variety of training videos that walk you through the setup of our products step by step. Our technical support team is praised worldwide: Our experts can help you with any issues you may encounter while using your ProSoft product.

With an aging work force, it is important to get the new engineers up to speed quickly, so we also have several educational videos focused on topics that we've heard from customers are at the front of their minds, including a Modbus tutorial; a guide to client, server, and I/O messaging for Ethernet networks; and tips on choosing the best Wi-Fi and Frequency Hopping antennas and how to install them. [ continued ]

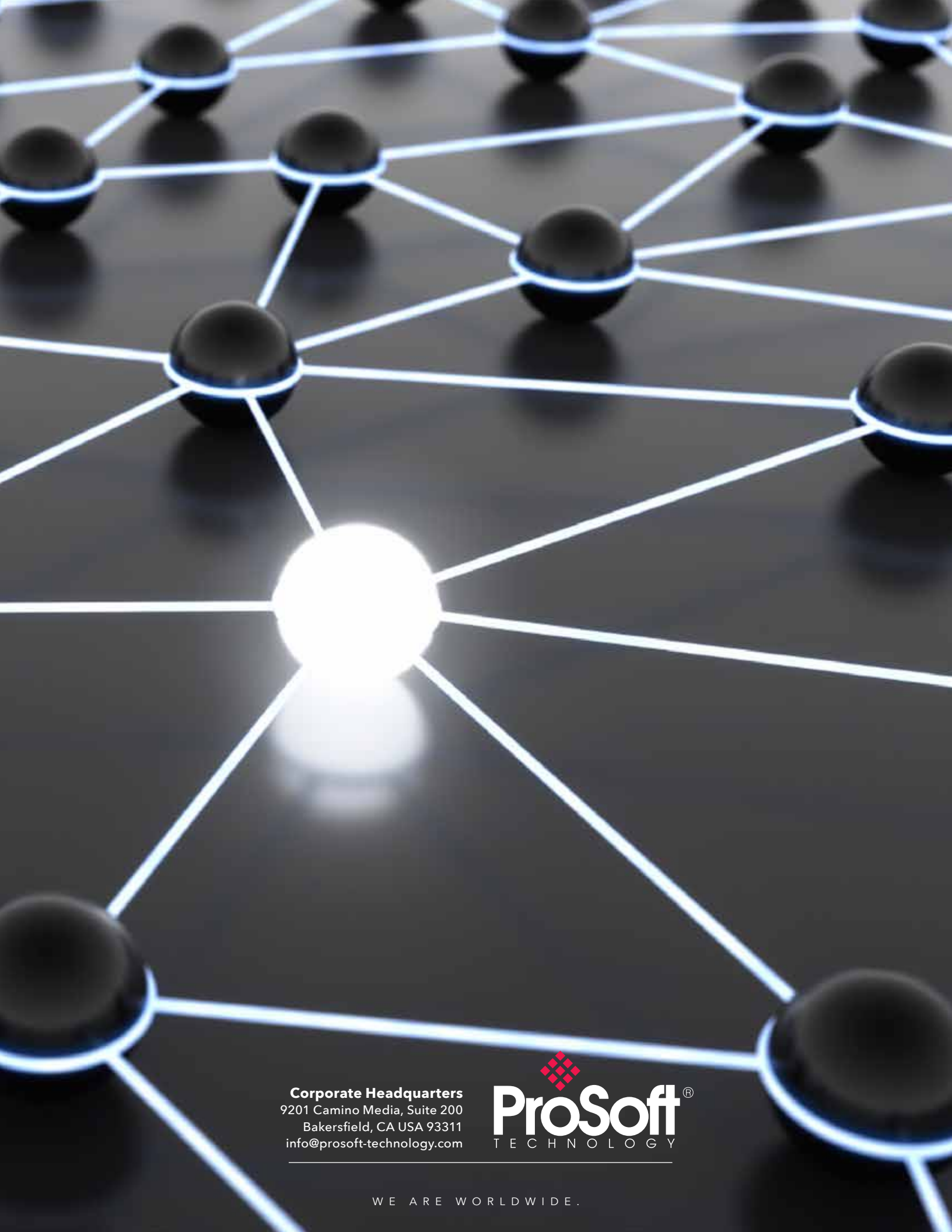
Having customers around the world, we offer some of our videos, industry brochures and websites in multiple languages. As the next generation of engineers come in we are ready to communicate with them via LinkedIn, Facebook, Twitter, and Google Plus so they can hear the latest news about our solutions and find out how our products are helping people across the globe. Feel free to contact us through our profiles if you have a question about how ProSoft can help you! ♦

---

***Our technical support team is praised worldwide.***







**Corporate Headquarters**  
9201 Camino Media, Suite 200  
Bakersfield, CA USA 93311  
[info@prosoft-technology.com](mailto:info@prosoft-technology.com)

  
**ProSoft**<sup>®</sup>  
TECHNOLOGY

WE ARE WORLDWIDE.