

## **Prolinx PDPS**

GSD Files Overview

### **User Manual**

January 19, 2006



# Please Read This Notice

The use and configuration of this software requires a reasonable working knowledge of the involved protocols and the application in which they are to be used. For this reason, it is important that those responsible for implementation satisfy themselves that the combination will meet the needs of the application without exposing personnel or equipment to unsafe or inappropriate working conditions.

This manual is provided to assist the user. Every attempt has been made to assure that the information provided is accurate and a true reflection of the product's functionality. In order to assure a complete understanding of the operation of the product, the user should read all applicable ProSoft documentation on the operation of the module and protocol driver.

Under no conditions will ProSoft Technology, Inc. be responsible or liable for indirect or consequential damages resulting from the use or application of the product. Reproduction of the contents of this manual, in whole or in part, without written permission from ProSoft Technology, Inc. is prohibited.

Information in this manual is subject to change without notice and does not represent a commitment on the part of ProSoft Technology, Inc. Improvements and/or changes in this manual or the product may be made at any time. These changes will be made periodically to correct technical inaccuracies or typographical errors.

## Your Feedback Please

We always want you to feel that you made the right decision to use our products. If you have suggestions, comments, compliments or complaints about the product, documentation or support, please write or call us.

### **ProSoft Technology, Inc.**

1675 Chester Avenue, Fourth Floor  
Bakersfield, CA 93301  
(661) 716-5100  
(661) 716-5101 (Fax)  
<http://www.prosoft-technology.com>

Copyright © ProSoft Technology, Inc. 2000 - 2006. All Rights Reserved.

Prolinx PDPS User Manual  
January 19, 2006

# Contents

**PLEASE READ THIS NOTICE.....2**

**Your Feedback Please .....2**

**1 PROLINX-PDPS GSD FILES OVERVIEW .....5**

**1.1 Overview.....5**

**1.2 Verifying the Module Version .....6**

**1.3 Original Revision x Revision A Overview .....6**

**INDEX .....9**



# 1 Prolinx-PDPS GSD Files Overview

## *In This Chapter*

- Overview ..... 5
- Verifying the Module Version ..... 6
- Original Revision x Revision A Overview ..... 6

## 1.1 Overview

The original release version of the Prolinx-PDPS modules supported a maximum limit of 200 input bytes and 200 output bytes. Eventually some of the Prolinx-PDPS modules were upgraded to support a maximum limit of 244 input bytes or 244 bytes output bytes. The data mapping offsets were also changes during this upgrade. Therefore the following GSD files are available for the user:

- **prlx05a5.gsd** – original release: Supports input/output limit of 200 bytes
- **pgwa05a5.gsd** – revision a: Supports input/output limit of 244 bytes

In order to check if your module supports the original release (200 bytes limit) or Revision A (244 bytes limit) please refer to the following table.

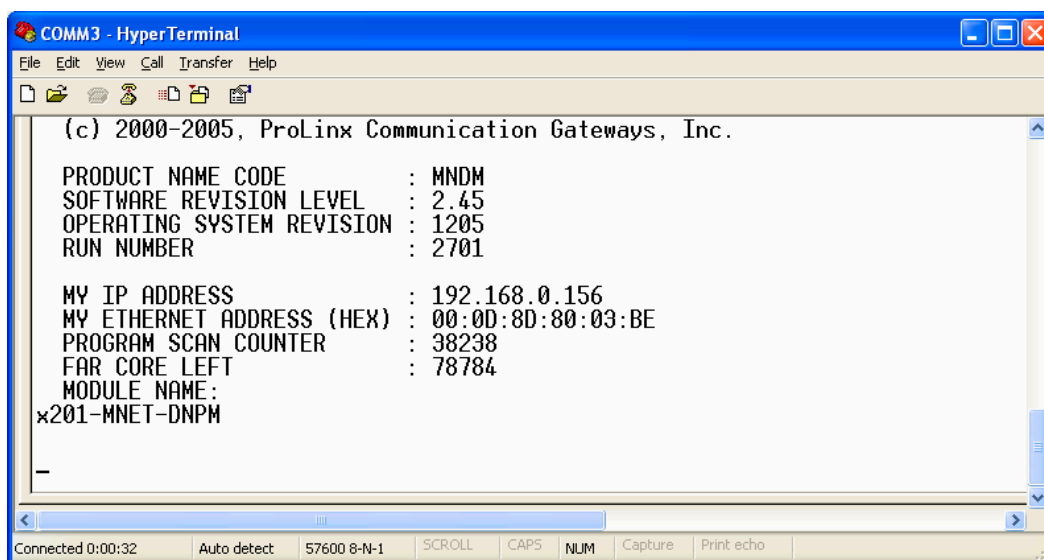
- *If the module version is older than the one indicated at the GSD **Revision A Available at Version** column then the **prlx05a5.gsd** file should be used. If you would like to upgrade your module for Revision A please contact Prosoft Technology Technical Support Team.*
- *If the module version is equal or newer than the version indicated at the GSD **Revision A Available at Version** column then the **pgwa05a5.gsd** file should be used.*

Module	GSD Revision A Available at Version
4105_103M_PDPS	2.47
x105_DFCM_PDPS	2.46
x105_DH485_PDPS	2.45
x205_DNPSNET_PDPS	2.44
4205_WEB_PDPS	2.44
4506_DEM_PDPS	2.43
x105_101S_PDPS	2.47
x105_ASCII_PDPS	2.43
x105_DNPM_PDPS	2.44

Module	GSD Revision A Available at Version
x105_DNPS_PDPS	2.43
x105_MCM_PDPS	2.48
x205_104S_PDPS	2.45
x205_DFNT_PDPS	2.47
x205_MNET_PDPS	2.45
x305_MBP_PDPS	2.43
x605_RIO_PDPS	2.45
6105_WA_PDPS	2.65

## 1.2 Verifying the Module Version

In order to verify the current version of the Prolinx module please select the V key (*Version Information*) at the debug menu to check the *Software Revision Level* value. The following screenshot shows an example of a module with version 2.45.



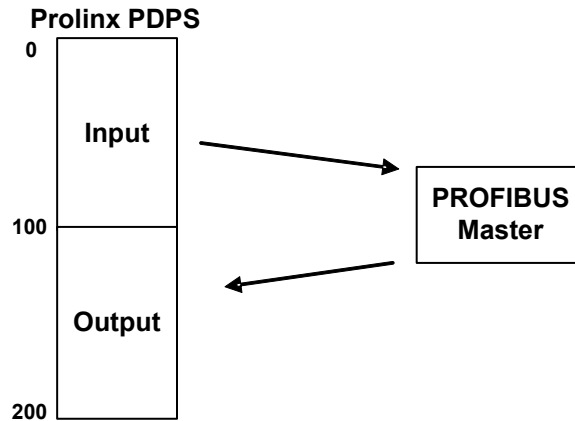
## 1.3 Original Revision x Revision A Overview

The difference between using a module that supports the original release or Revision A is related to the data mapping and maximum limits of input and output data:

### Original Release

The data mapping is implemented as indicated below. The input area ranges from database word address 0 to 99. The output area ranges from database word address 100 to 199.

- Maximum Number of Input Words: 100 (200 bytes)
- Maximum Number of Output Words: 100 (200 bytes)



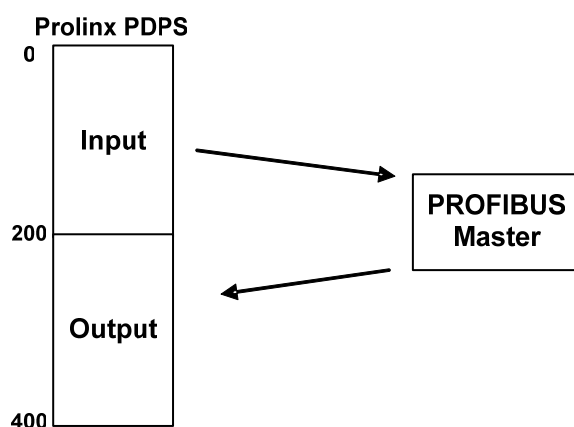
### Revision A

The data mapping for the Revision A occurs as indicated below. The input area ranges from database word address 0 to 122. The output area ranges from database word address 200 to 322. Also:

- Maximum Number of Input Words: 122 (244 bytes)

Maximum Number of Output Words: 122 (244 bytes)

**Note:** The total number of input words and output words should not be greater than 200 words (400 bytes).





## Index

### O

Original Revision x Revision A Overview • 5  
Overview • 4

### P

Please Read This Notice • 2  
Prolinx-PDPS GSD Files Overview • 4

### V

Verifying the Module Version • 5

### Y

Your Feedback Please • 2