

TermLinx Installation Guide

1 Installing the Software

This section contains important information about installing the software.

1.1 Software CDs

The number of CDs you receive depends on the type of order you placed. If you are:

- Upgrading your software, you have received 2 CDs: TermLinx Client and TermLinx Server.
- Purchasing TermLinx for the first time, you have received 3 CDs per licensed site: TermLinx Client, TermLinx Server, and RSLinx Classic OEM.

Important: You should only install the TermLinx Server on the Touch Screen PC. The TermLinx Server is intended to "take over" the PC, and will cause undesired effects if it is installed on a PC that will be used for any other purpose.

1.2 Installation

- 1 Install the TermLinx Server CD on your touch screen PC(s). A license is required for each installation.

Server Application Notes

- o Oracle Database

During the Server installation, the Oracle Database (10g Express Edition) will install. This is a silent install, which does not require any action from you, but may take up to 20 minutes to complete. Please allow sufficient time for this process to complete.

- o RSView

** Most users do not need this.*

During the Server installation, you will see a checkbox for RSView. Check this box **ONLY** if you intend to embed TermLinx in RSView and have not started to build your RSView project from scratch.

If you intend to use an HMI package other than RSView, the RSView project is not useful. If you do not intend to use RSView, but do install it, environment variables will be created that will have to be deleted.

For RSView users with existing projects, the environment variables will have to be altered to address the existing project rather than the ProSoft template, or RSview projects will have to be renamed and/or relocated.

** Most users do not need this.*

Note: If you install this feature and leave it unaltered, you must also install (separately) the RSView runtime with proper activation, or TermLinx Server will not run.

Using TermLinx within an HMI

The TermLinx Server startup command file can be found in C:\TermLinx\Programs. Open the file in a text editor to read it and learn how to set up the environment so that TermLinx can run as an ActiveX component of any HMI project. The two text files "VBA_Main.txt" and "VBA_Ovrw.txt" (which can be found in C:\TermLinx\Doc) are VBA scripts for interfacing embedded TermLinx to its containing HMI application that can be dropped directly into your HMI project.

- 2 Install the RSLinx CD on the host machine after the TermLinx Server CD.
- 3 The TermLinx Client CD is to be installed on PCs used by your System Integrator, Configurator, or others who will be using the TermLinx Configuration or Database Managers.

Important: After the install is complete, reboot your machine.

- 4 Next, make sure the Windows Firewall is Off on both the TermLinx Server and the computer on which you've just installed the TermLinx Client CD.

Turning off the Windows Firewall

1. Start / Settings / Control Panel / Network Connections
2. On the left, choose "Change Windows Firewall settings"
3. In the General tab, make sure "Off" is selected
- 5 On the computer where you've installed the TermLinx Client CD, you need to setup the ODBC connection to the TermLinx Server. You will need to know the IP address of the TermLinx Server, and be able to successfully ping to it.

Create an ODBC Connection

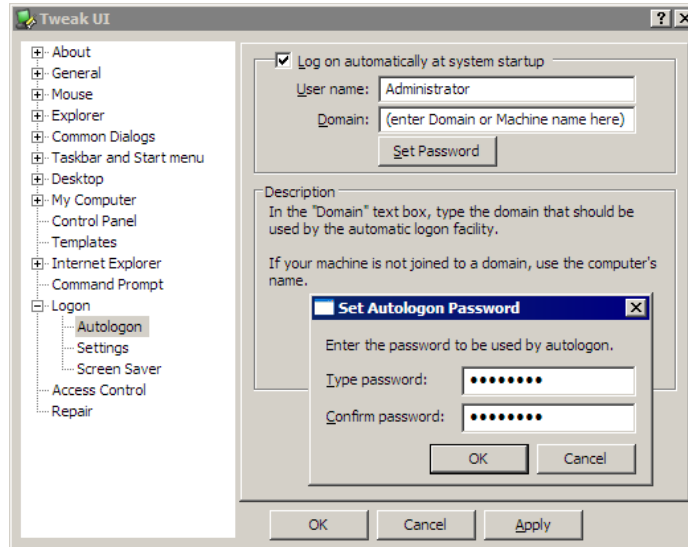
1. Start / Settings / Control Panel / Administrative Tools / Data Sources (ODBC)
2. In the System DSN tab, click Add
3. Highlight "Oracle in XE" and click Finish
4. Enter into the first 3 fields:
 - a. Data Source Name = TermLinx
 - b. Description = TermLinx Truck Terminal Automation
 - c. TNS Service Name = //<TermLinx Server's IP address>
5. Click Test Connection
 - a. User Name = termlinx_mgr
 - b. Password = termlinx_mgr
6. You should get a "Connection successful" message.

2 Pre Production

This section contains important information about configuring and setting up your software. Please refer to the TermLinx Configuration Manager Manual or the TermLinx Database Manager Manual for more detailed information.

2.1 Network Setup

- 1 Enter the machine name in UPPER CASE.
- 2 Use TweakUI to configure the machine to login automatically to the Domain or Workgroup: <Programs> <Powertoys for Windows XP> <TweakUI>:



- User "Administrator"
 - Password "termlinx"
- 3 In TweakUI, verify that the General > Focus setting "Prevent applications from stealing focus" is unselected (unchecked). This configuration item is set automatically during installation, however if you log into the machine with a different username during configuration, you should verify that the setting is still disabled.
 - 4 Set up display options: <Settings><Control Panel>"Display"
 - Screen resolution 800x600 (SVGA)
 - "Screen saver" tab, select "none", then click "Power" button.
 - "Power schemes" tab, choose "Presentation" (so both monitor and hard disks never turn off)
 - "Apply" all and exit
 - 5 TermLinx must have at least Read and Write access to all contents of C:\TermLinx\Instance.
 - 6 Turn off Automatic Updates: <Settings><Control Panel>"Automatic Updates"
 - 7 Reboot the PC and enter Setup mode, and make sure that the PC is configured to turn on automatically after a power interruption.

2.2 Enable Remote Access to the Host Computer

Most deployments will require some form of secure remote access by their corporate head office to the host computer. You may also need to grant remote access to ProSoft Technical Support for assistance with troubleshooting. PC Anywhere, Remote Desktop and VNC are three common methods; use the one that is recommended by your Information Technology department.

2.3 Set up the PLC

Warning: Do not run TermLinx while setting up the PLC. If you do, the key for RSLinx may be lost.

2.4 Sample Database

A sample configuration and sample database (with the site ID "ProSoft") are installed automatically. However, you must use TermLinx Configuration Manager to create your own site in order for your product to work correctly. Refer to the Configuration Manager and Database Manager manuals for details about setting up a Site and creating the database.

Tip: After setting up a new site in the DBM Site table, you can move between the sample site and your site by going to Administration>Site Selection and choosing a Site ID.

2.5 Set up the Document Printer(s)

Set up one or more printers as you would for any Windows machine.

All printers must be connected to local parallel or USB ports; **network printing by TermLinx is not available.**

If you are performing both lifting and dumping, and you do not have separate preprinted forms for those, you may print both BOLs and BOUs on the same printer using a single port.

The Transaction Log printer must be a line printer, not a page printer, TermLinx will send it raw ASCII text. Please configure accordingly.

2.6 Change Login

For security purposes, change the Emergency GUI Login from the default User ID 1, Password 1. If your system contains a SuperTrucker driver ID, disable it by setting the values to 0.

The script file CREATUSR.SQL of the TermLinx database schema defines the roles and several typical User IDs. Comments in that file outline the purpose of each role. You can create, delete or change any User ID except for the schema owner.

The following User IDs must be configured to TermLinx in the TermLinx Configuration Manager for TermLinx to run successfully:

- user TERMLINX_KRN of role TERMLINX_SRVR
- user TERMLINX_MGR of role TERMLINX_USER.

Refer to the TermLinx Configuration Manager Manual for more information on how to manage User IDs.

3 Ready for Production

This section contains important information about what to do when you're ready for production.

3.1 Configure the Taskbar:

The taskbar must be configured before running TermLinx on a machine.

To configure:

- 1 Go to Start > Settings > Taskbar and Start Menu.
- 2 Uncheck "Always on Top".
- 3 Check "Auto hide".
- 4 For Windows XP, uncheck "Lock".
- 5 Drag the top edge of the taskbar to the bottom of the screen.
- 6 For Windows XP, check "Lock".

3.2 Set Boot Mode

Once you're ready for production, you must change Boot Mode from the default setting.

To set boot mode:

- 1 Open the Configuration Manager and from the File menu, choose Instance.
- 2 In the Configuration tab, change the Boot Mode field to 0 – Automatic Startup.
- 3 Click Apply, and then click Done.

Note: If you do not click Apply, your changes will not be saved.