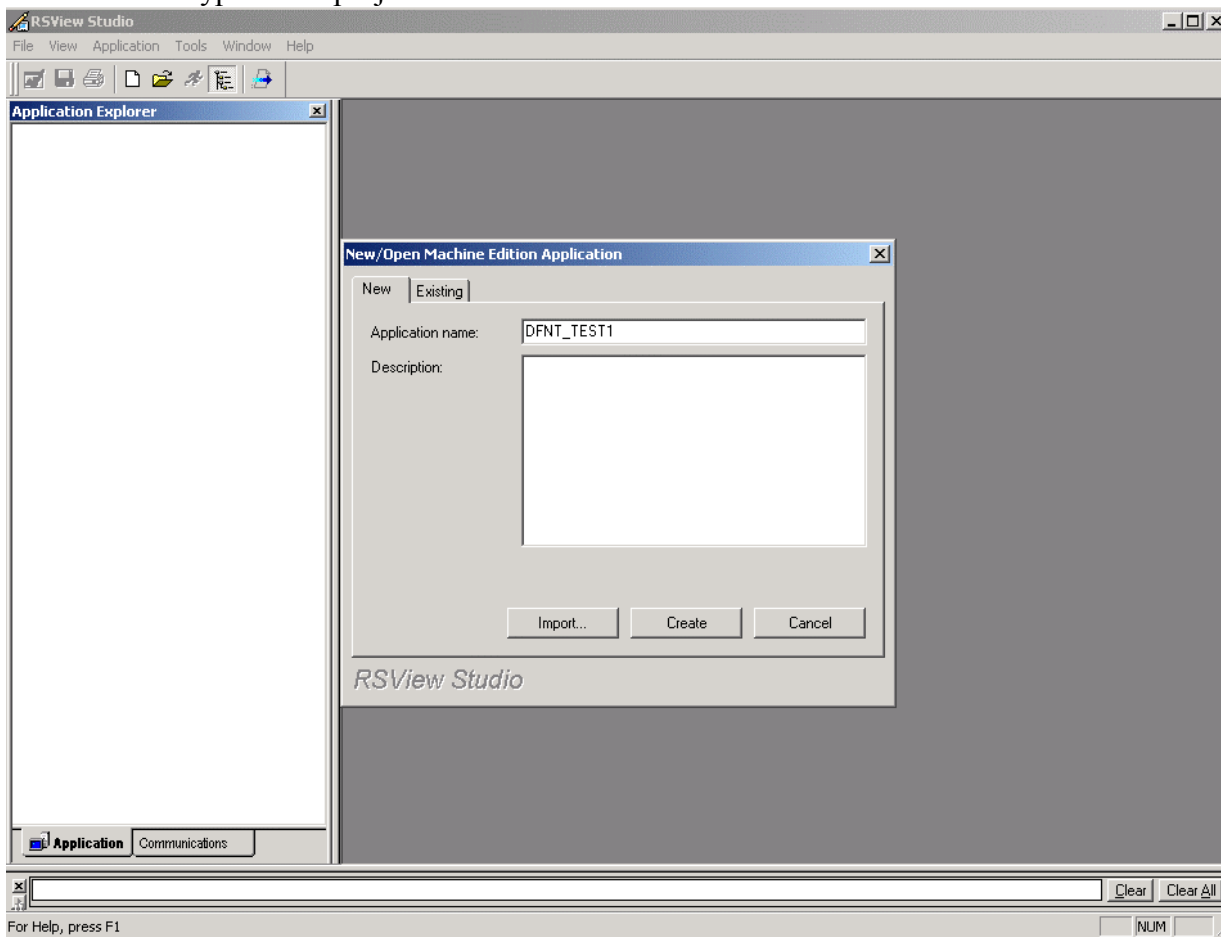


This is a walk-through for connecting a ProSoft Technology, Inc. DFNT communications module to a PanelView Plus. This document assumes the user has a reasonable understanding of the RSVIEW Studio development environment.

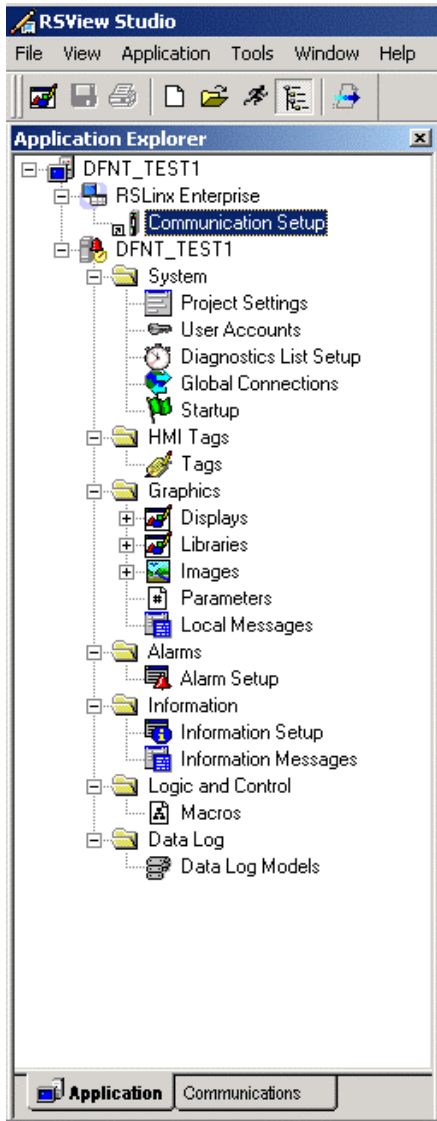
**When using the PanelView Plus to communicate with a DFNT module, the setting in the DFNT.cfg file referred to as “DFNT Server Size”, or “Server Size”, must be set to 100.**

**Step 1. Create a new ME Addition Project**  
a. Type in the project name and click Create

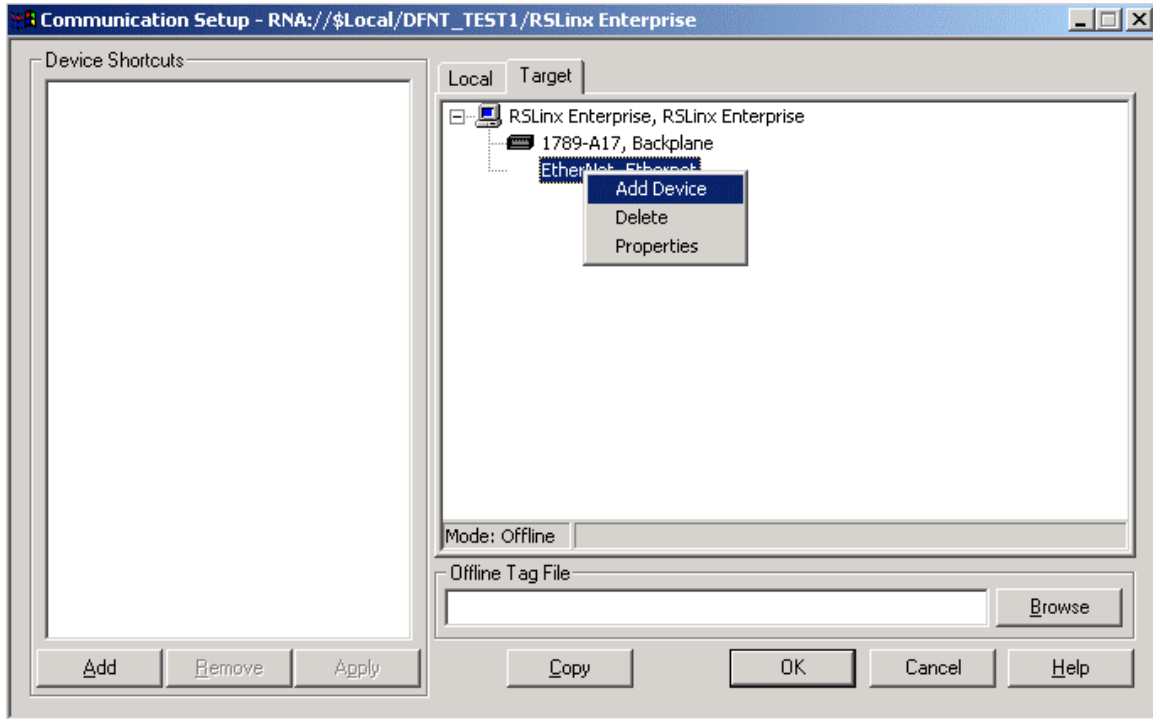


## Step 2. Communications Setup

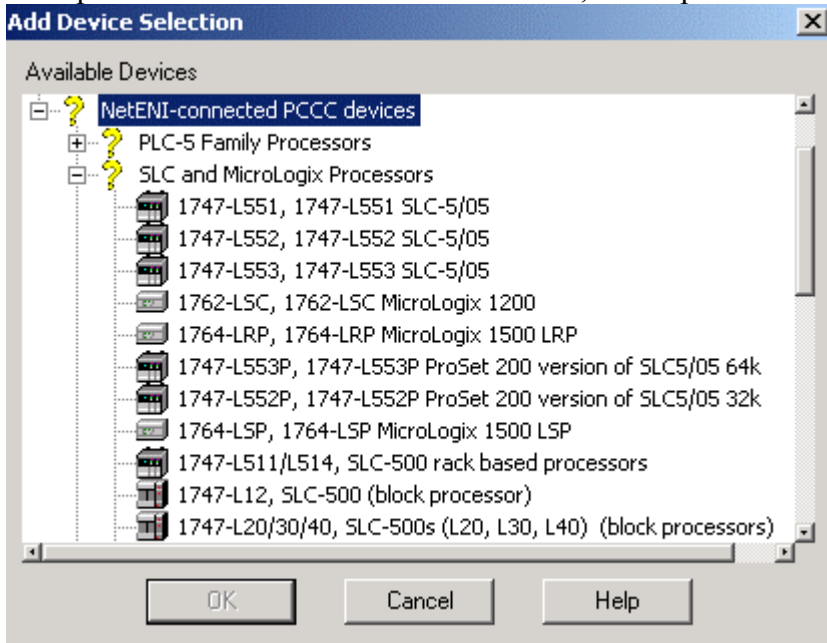
- a. Once this view is opened, expand RSLinx Enterprise
- b. Double-click on Communication Setup



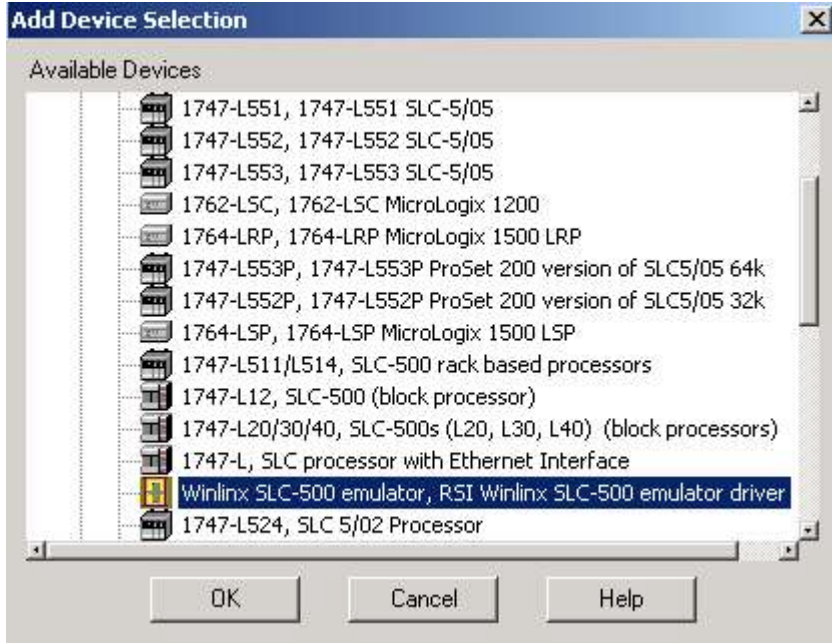
- c. Click on the Target tab
- d. Right-click on Ethernet, Ethernet
- e. Choose Add Device



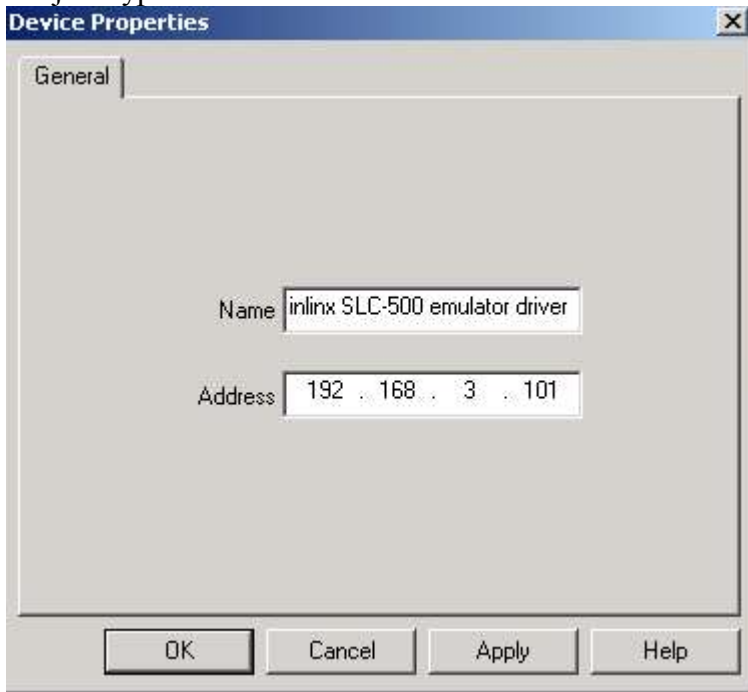
- f. Expand NetENI-connected PCCC devices, and expand SLC and MicroLogix Processors



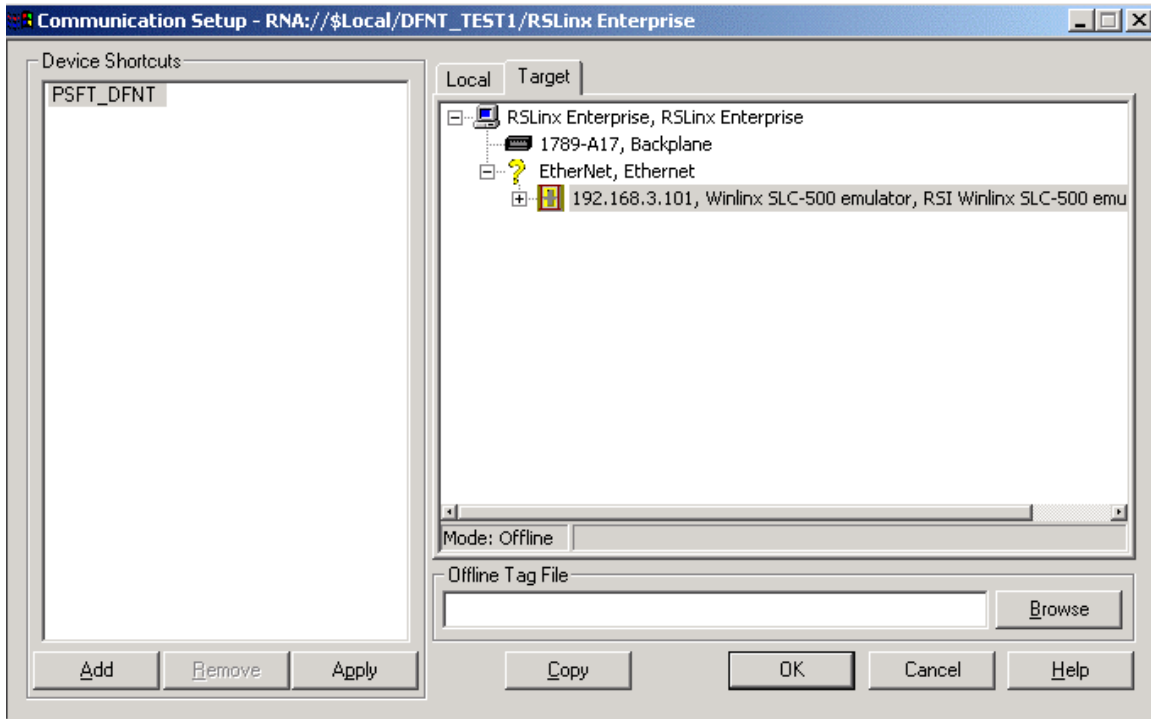
- g. Select Winlinx SLC-500 emulator, RSI Winlinx SLC-500 emulator driver
- h. Click OK



- i. Give your driver a name
- j. Type in the IP Address of the DFNT module and click OK



- k. Under the Target window, select the newly added device
- l. In the Device Shortcuts window, click on Add
- m. Give the shortcut a name (this example uses PSFT\_DFNT)
- n. Click OK



### Step 3. Creating Tags

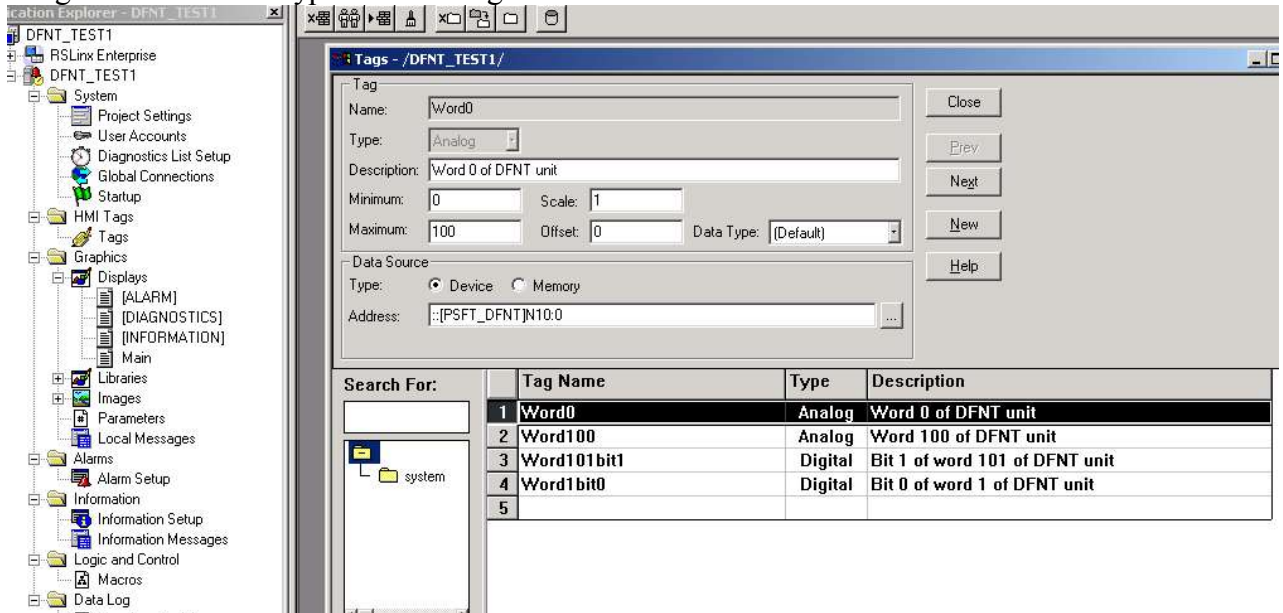
- In the tree window on the left, expand HMI Tags and double-click on Tags
- Type in a tag name
- If addressing a word value, select analog and select digital if addressing a bit
- Fill in other values that are appropriate for the value of the tag
- Select Device as the Data Source
- Type in the address for the tag

\* **Note.. the syntax for the address is ::[shortcut name]address**

**Example: ::[PSFT\_DFNT]N10:0**

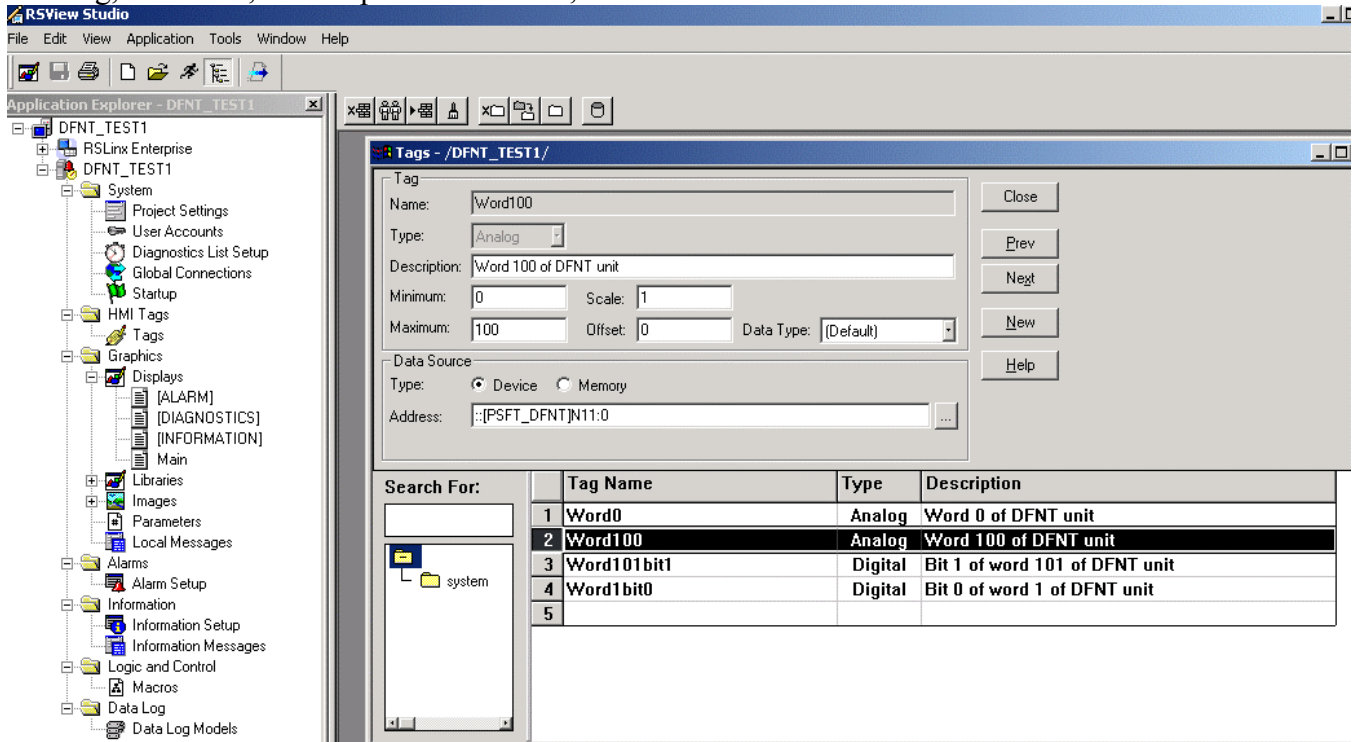
**The above example will map to word address 0 of the DFNT module**

- Select Next to type in a new tag and click Close when finished

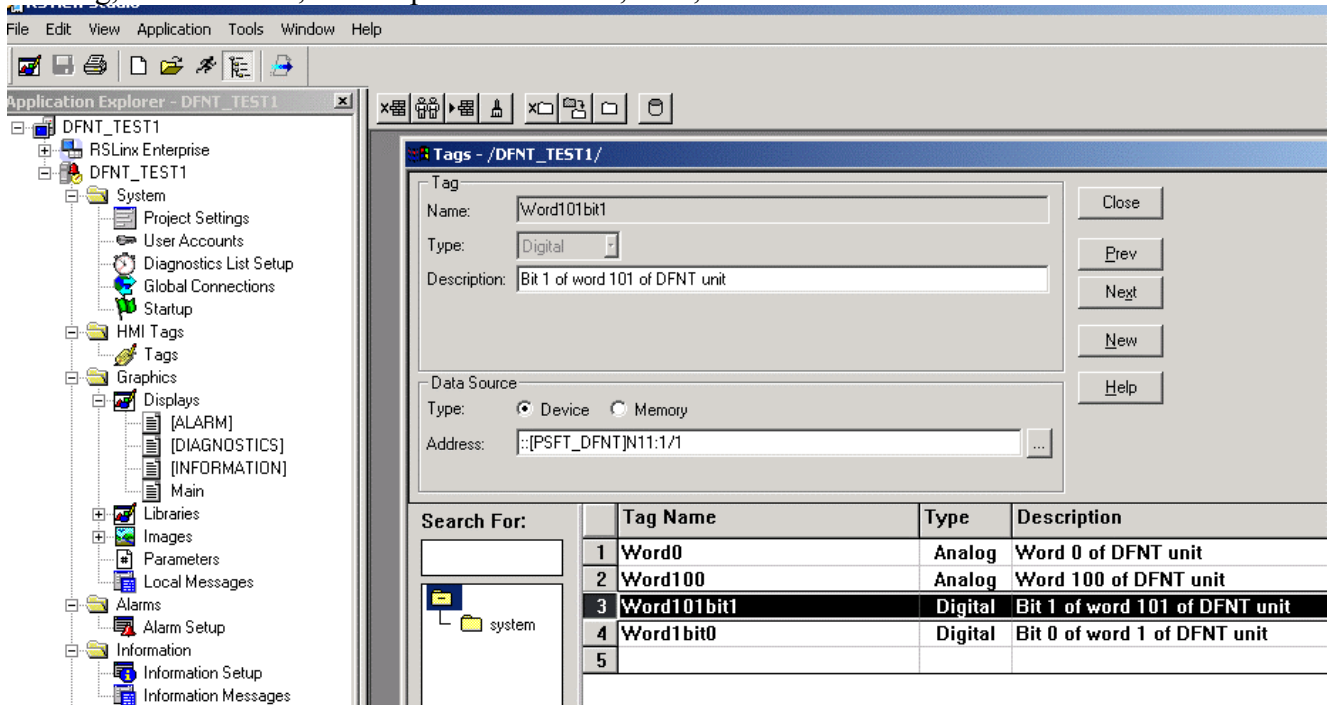


The next few images are examples of different tags.

This tag, Word100, will map to address 100, or N11:0 of the DFNT module



This tag, Word101bit1, will map to address 101, bit 1, or N11:1/1 of the DFNT module



This tag, Word1bit0, will map to address 1, bit 0, or N10:1/0 of the DFNT module

The screenshot shows the RSView Studio interface. On the left is the 'Application Explorer' tree for project 'DFNT\_TEST1'. The main window displays the 'Tags - /DFNT\_TEST1/' configuration panel. The 'Tag' section shows:
 

- Name: Word1bit0
- Type: Digital
- Description: Bit 0 of word 1 of DFNT unit

 The 'Data Source' section shows:
 

- Type: Device (selected)
- Address: ::[PSFT\_DFNT]N10:1/0

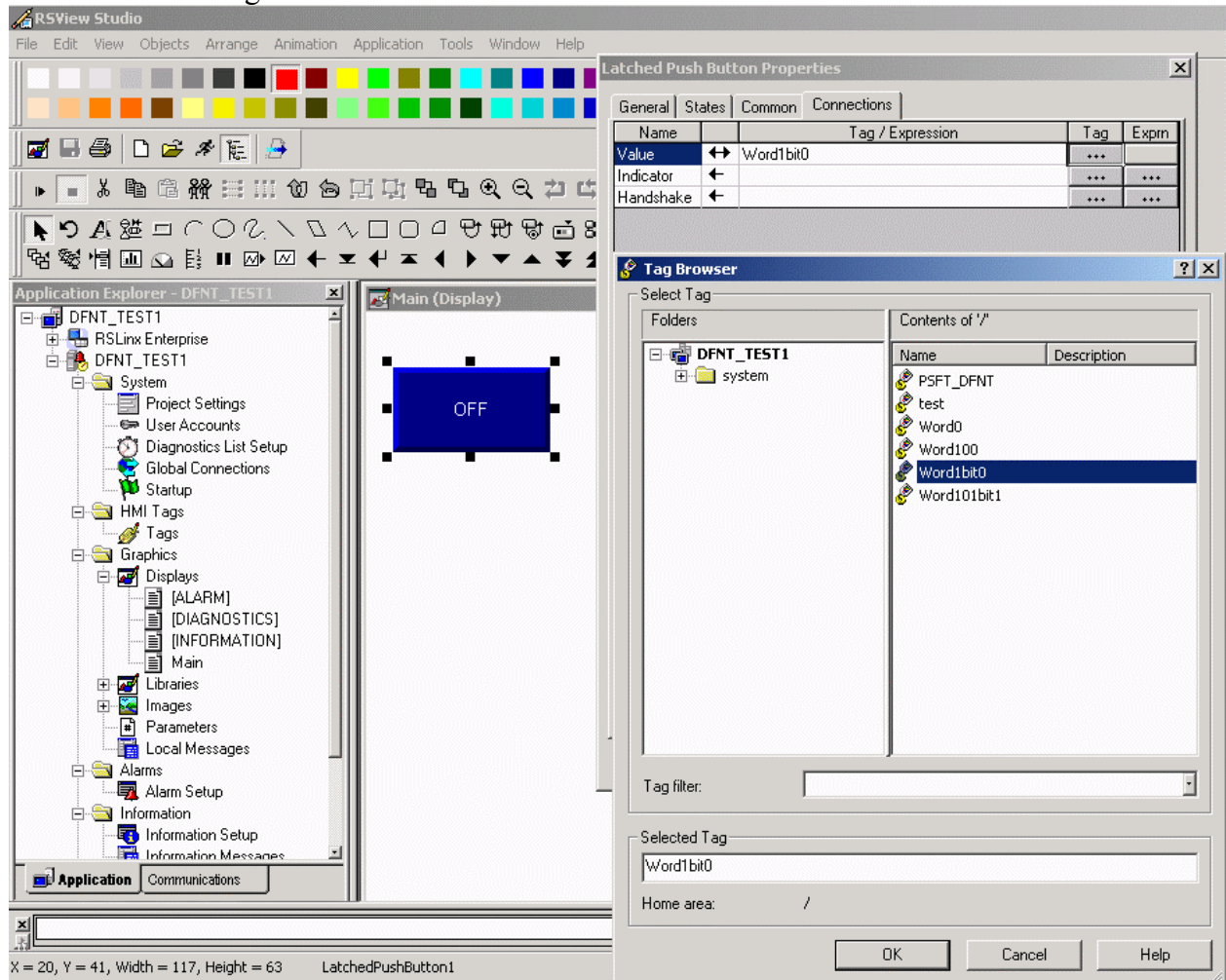
 Below the configuration panel is a table listing tags in the project:

Search For:	Tag Name	Type	Description
	1 Word0	Analog	Word 0 of DFNT unit
	2 Word100	Analog	Word 100 of DFNT unit
	3 Word101bit1	Digital	Bit 1 of word 101 of DFNT unit
	4 Word1bit0	Digital	Bit 0 of word 1 of DFNT unit
	5		

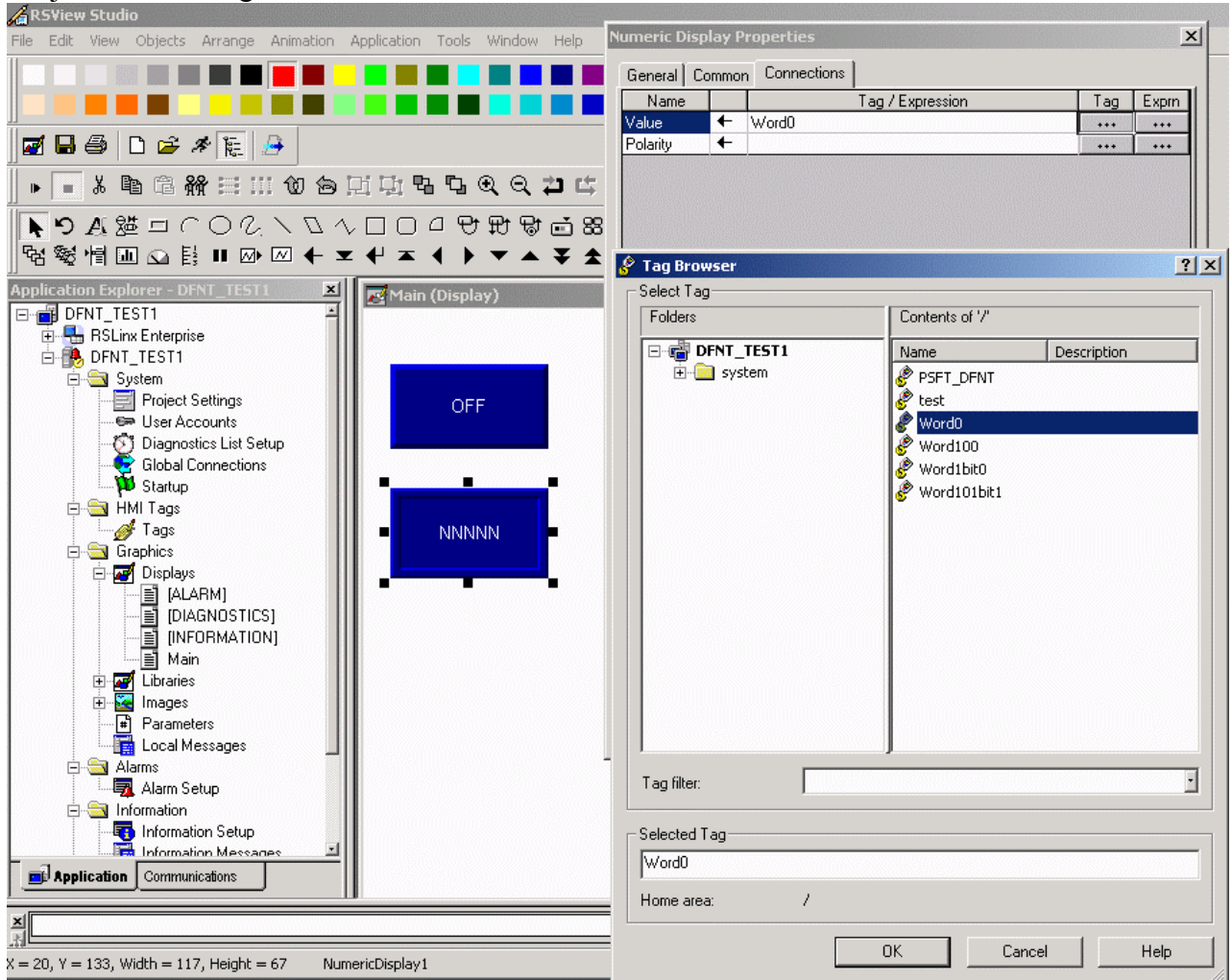


#### Step 4. Assigning Tags to an Object

- Create a pushbutton
- Double-click on the created pushbutton
- In the Value row, click on ... under the Tag column
- Select the appropriate bit-level tag and click OK
- Click OK again

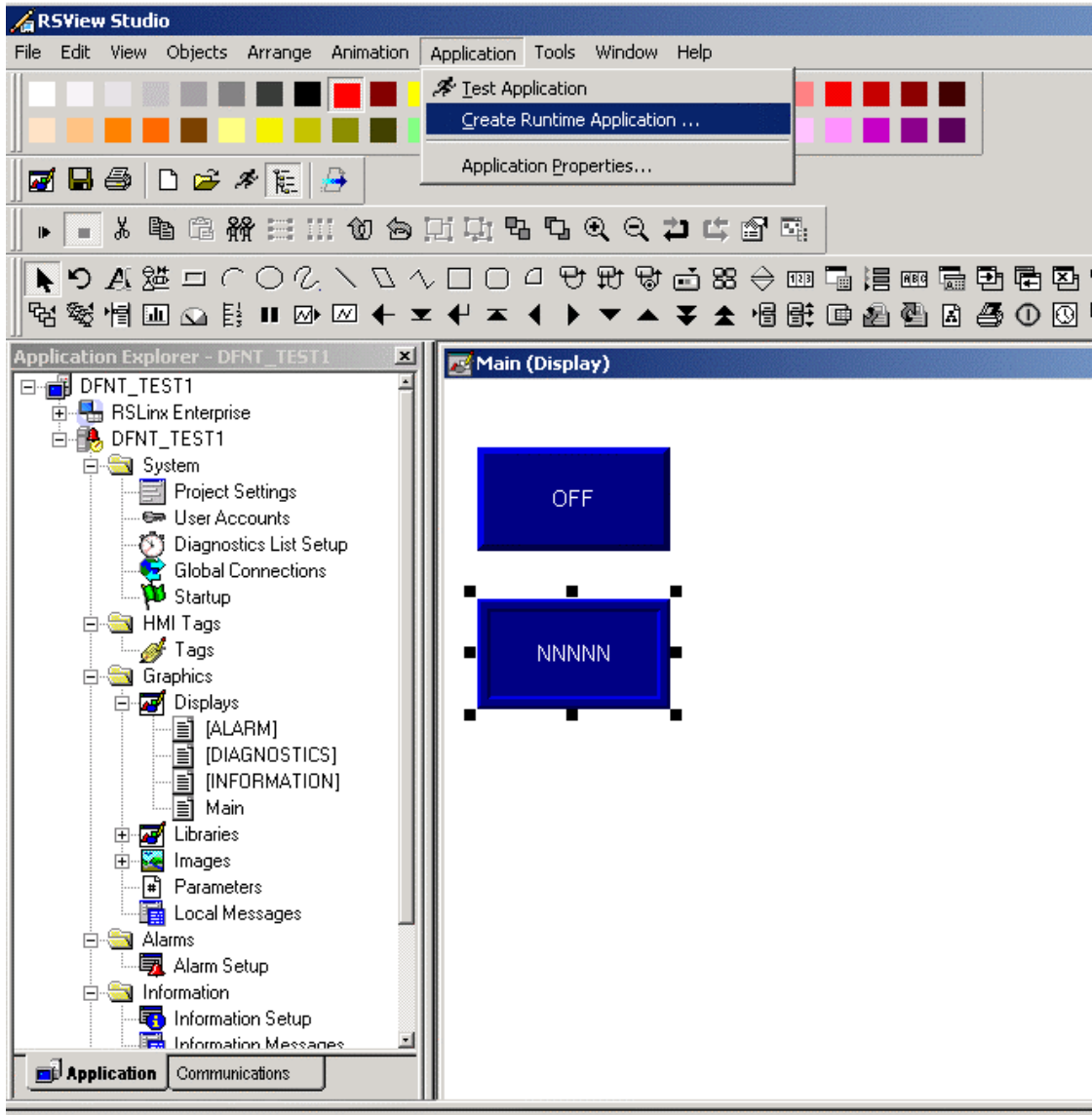


- f. Create a Numeric Display
- g. Double-click on the Numeric Display
- h. In the Value row, click on ... under the Tag column
- i. Select the appropriate word-level tag and click OK
- j. Click OK again

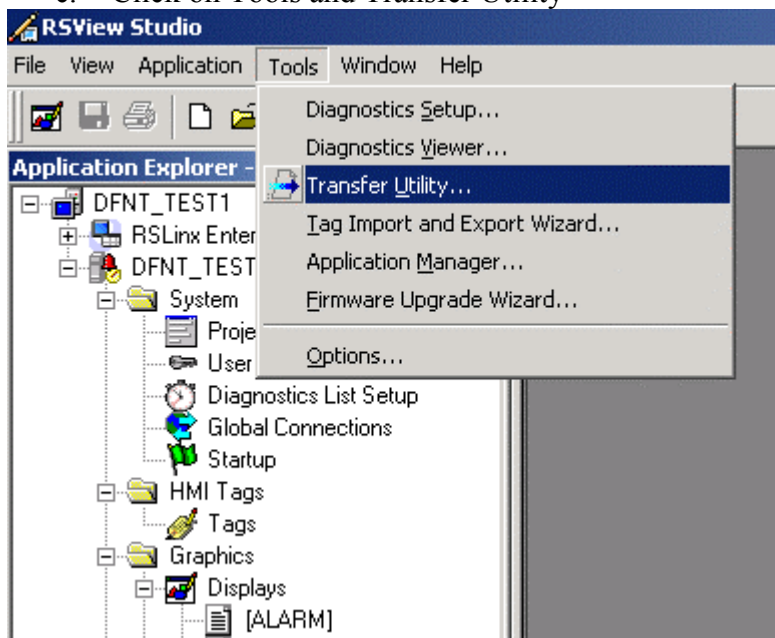


## Step 5. Creating Runtime Application and Downloading

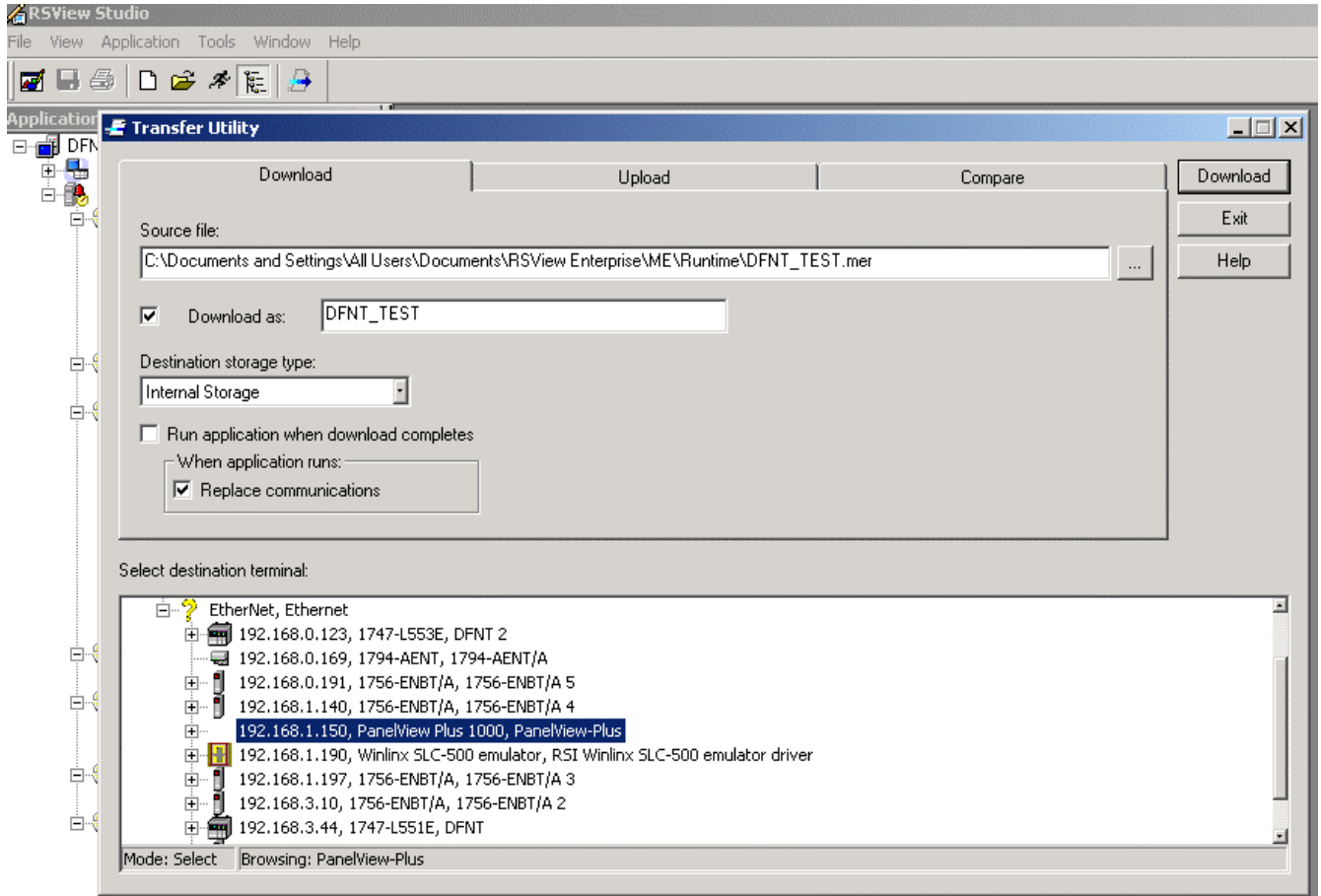
- a. Click on Application and Create Runtime Application
- b. Select a name for the .mer file to be created and click save



c. Click on Tools and Transfer Utility



- d. Browse for and select the .mer file you created earlier
- e. Choose Replace communications (**THIS WILL OVERRIGHT YOUR EXISTING COMMUNICATIONS**)
- f. Click Download



Once the download finishes and the PanelView Plus reboots, your application should be running.

For technical assistance, contact ProSoft Technology, Inc., Support Department using the below contact information.

**ProSoft Technology Inc.**

1675 Chester Ave.

Second Floor

Bakersfield, CA 93301

United States of America

Tel: +1 661-716-5100

Fax: +1 661-716-5101

Web: [www.prosoft-technology.com](http://www.prosoft-technology.com)

Email: [prosoft@prosoft-technology.com](mailto:prosoft@prosoft-technology.com)

**Technical Support Department**

Tel: +1 661-716-5100

Fax: +1 661-716-5101

Web: <http://www.prosoft-technology.com/content/view/full/26>

Email: [support@prosoft-technology.com](mailto:support@prosoft-technology.com)

---

**Corporate Office:**

1675 Chester Avenue, Fourth Floor

Bakersfield, CA 93301

661/716-5100 Fax: 661/716-5101