

Application Note

AN-X-DCSNet: Using the AutoMax Tag Export Utility



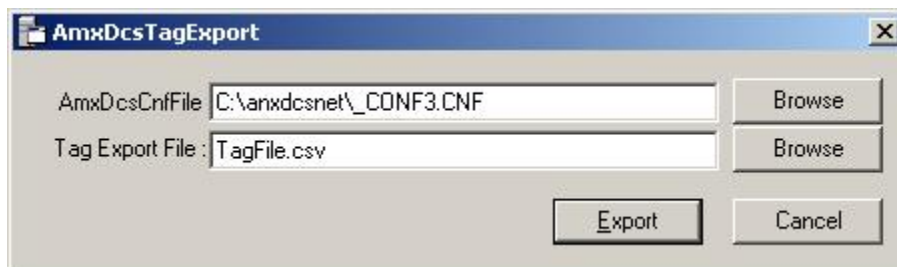
When you use the variable configurator in the AutoMax Programming Executive to create variables, and then create a configuration, it creates the file `_conf.cnf`, which contains the variable names and locations.

You can use the AN-X-DCSNet utility `AmxDcsTagExport.exe` to extract variables from the configuration file and export them to a comma-separated variable (CSV) file, which can be edited with a spreadsheet such as Excel or with a text editor, and imported into an OPC server.

This utility searches the configuration file for NETDEFs, extracts the variable name and address, and converts the AutoMax address into the PLC-5 address that the OPC server can use to access the variable on the AN-X-DCSNet.

To use the utility:

1. Run `AmxDcsTagExport.exe`



2. Browse or type the configuration file name into the *AmxDcsCnfFile* box.
3. Browse or type the destination file name into the *Tag Export File* box.
4. Click *Export*.

Sample configuration file

```
100      IODEF    DROPSTAT1%( SLOT=0,REGISTER=4 ]
101      IODEF    DROPSTAT2%( SLOT=0,REGISTER=5 ]
102      IODEF    DROPSTAT3%( SLOT=0,REGISTER=6 ]
103      IODEF    DROPSTAT4%( SLOT=0,REGISTER=7 ]
104      NETDEF    BROAD32%( SLOT=0,DROP=0,REGISTER=32 ]
```

Quest Technical Solutions

4110 Mourning Dove Court
Melbourne FL 32934
321 757-8483
www.qtsi.biz



Using the AutoMax Tag Export Utility

```
105     NETDEF   BROAD33%[SLOT=0,DROP=0,REGISTER=33]
106     NETDEF   BROAD34%[SLOT=0,DROP=0,REGISTER=34]
107     NETDEF   BROAD35%[SLOT=0,DROP=0,REGISTER=35]
108     NETDEF   BR0AD36%[SLOT=0,DROP=0,REGISTER=36]
109     NETDEF   BROAD37%[SLOT=0,DROP=0,REGISTER=37]
110     NETDEF   BROAD38%[SLOT=0,DROP=0,REGISTER=38]
111     NETDEF   BROAD39%[SLOT=0,DROP=0,REGISTER=39]
112     NETDEF   DROP1REG0%[SLOT=0,DROP=1,REGISTER=0]
113     NETDEF   DROP1REG1%[SLOT=0,DROP=1,REGISTER=1]
114     NETDEF   DROP1REG63%[SLOT=0,DROP=1,REGISTER=63]
115     NETDEF   DROP55REG0%[SLOT=0,DROP=55,REGISTER=0]
116     NETDEF   D55R1B0@[SLOT=0,DROP=55,REGISTER=1,BIT=0]
117     NETDEF   D55R1B15@[SLOT=0,DROP=55,REGISTER=1,BIT=15]
118     NETDEF   D55R62B0@[SLOT=0,DROP=55,REGISTER=62,BIT=0]
119     NETDEF   D55R62B15@[SLOT=0,DROP=55,REGISTER=62,BIT=15]
120     NETDEF   DROP55REG63%[SLOT=0,DROP=55,REGISTER=63]
32767     END
```

Imported Tag file

Here is the file generated by AmxDcsTagExport.exe.

```
TagName,Address,DataType,Slot
BROAD32,N100:32,Word,0
BROAD33,N100:33,Word,0
BROAD34,N100:34,Word,0
BROAD35,N100:35,Word,0
BR0AD36,N100:36,Word,0
BROAD37,N100:37,Word,0
BROAD38,N100:38,Word,0
BROAD39,N100:39,Word,0
DROP1REG0,N101:0,Word,0
DROP1REG1,N101:1,Word,0
DROP1REG63,N101:63,Word,0
DROP55REG0,N155:0,Word,0
D55R1B0,N155:1/0,Boolean,0
D55R1B15,N155:1/15,Boolean,0
D55R62B0,N155:62/0,Boolean,0
D55R62B15,N155:62/15,Boolean,0
DROP55REG63,N155:63,Word,0
```

Using the AutoMax Tag Export Utility

Each record consists of the variable name from the AutoMax Programming Executive, the PLC-5 address, the type (Word or Boolean), and the slot number of the 57C404 in which the variable is defined.

Only those lines that contain the keyword NETDEF in the configuration file were use to create tags.

Refer to the documentation for your OPC server for information on the format of the CSV file it can import.

Quest Technical Solutions

4110 Mourning Dove Court

Melbourne FL 32934

321 757-8483

www.qtsi.biz

